

XO LIFT MANUAL

WARRANTY DISCLAIMER READ BEFORE USING PRODUCT

This product is a specialized lift designed exclusively for lightweight competition vehicles, specifically those weighing less than 4500 pounds and used off-highway. It is important to note that DirtCarLift.com does not have direct knowledge of the individuals who will utilize this lift or the specific contexts in which it will be employed.

This lift is a component that should be integrated into a larger system. It is crucial to use additional safety equipment, such as jack stands, which are not supplied with this product. Furthermore, only individuals who are proficient in operating hydraulic lifts should handle this equipment.

Due to the variable nature of how this lift may be used, DirtCarLift.com cannot provide any warranty, whether explicit or implied. The responsibility to determine the appropriateness of this lift for a particular racing application rests solely with the end user. It is imperative to understand that this lift is not designed for, nor should it be used in, vehicles that are driven on public highways. It has not been certified for such use. Improper use of this product could lead to severe injury or even fatality. The end user assumes all responsibility for any risks associated with the use of this lift

CAUTION

PLEASE CYCLE LIFT UP AND DOWN AT LEAST TWICE TO BLEED AIR FROM THE HYDRAULIC SYSTEM BEFORE LIFTING YOUR CAR. FAILURE TO DO SO MAY RESULT IN THE LIFT TWISTING.

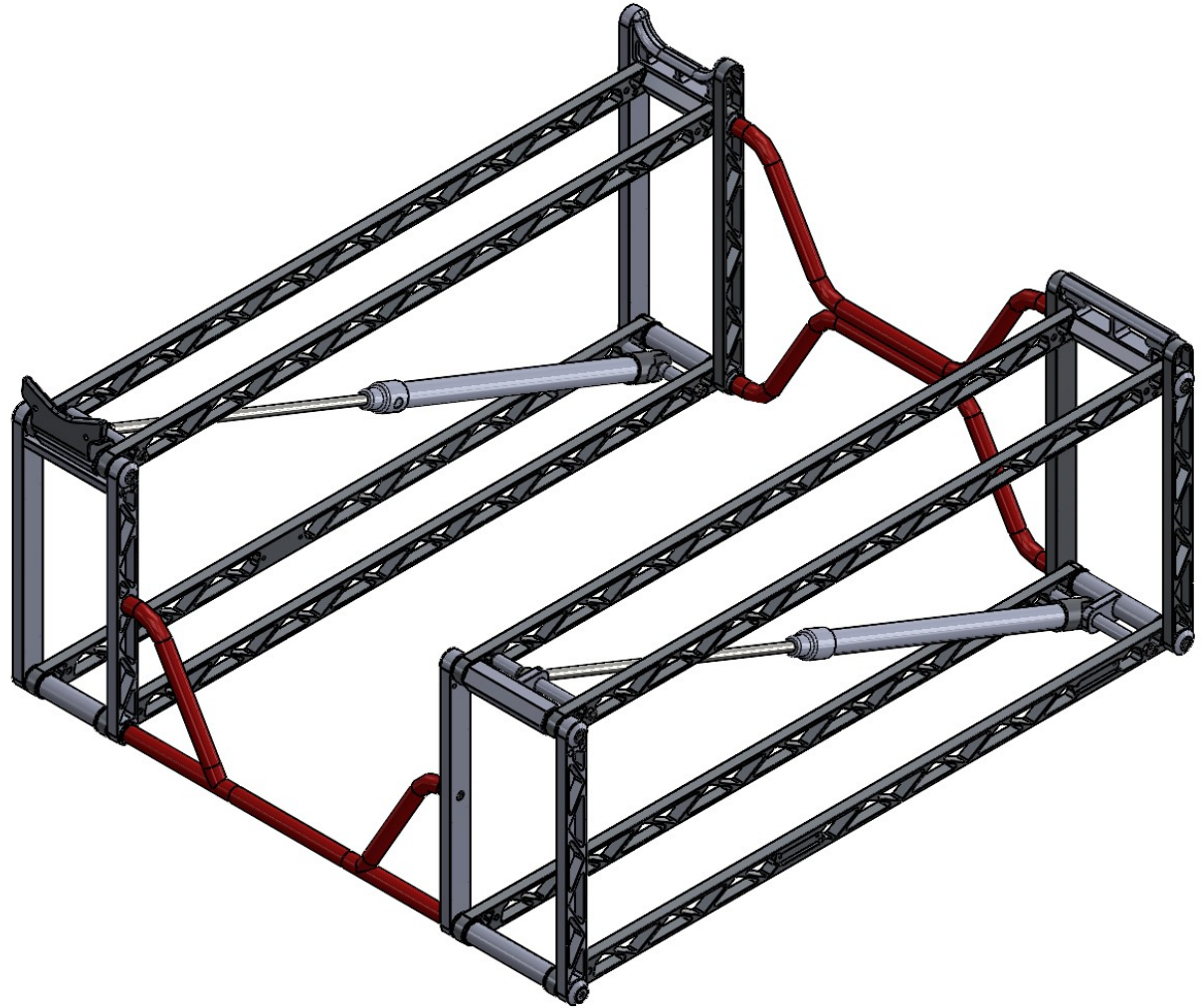
BEWARE OF:

- PINCH POINTS
- OVER TIGHTENING FASTENERS
- STRIPPING FASTENERS
- INSUFFICIENT GREASING
- LOOSE PARTS
- LOSING PARTS

DO NOT:

- EXCEED WEIGHT LIMIT OF 4500 POUNDS
- CUT INTO OR SHAVE OFF ANY MATERIAL FROM THE PRODUCT
- REPLACE OR CHANGE PARTS, UNLESS OTHERWISE INSTRUCTED BY MANUFACTURER
- OPERATE A DAMAGED PRODUCT
- INSTALL OR USE PRODUCT UPSIDE DOWN
- EXCESSIVELY DRIVE BOLTS AFTER THEY HAVE BEEN FULLY SEATED
- ASSEMBLE ANY PARTS WITHOUT READING THE NOTES
- ASSEMBLE TIGHT FIT PARTS WITHOUT PROPERLY GREASING THEM
- USE INCOMPATIBLE GREASE OR HYDRAULIC FLUID WITH THE LIFT

ITEM NO.	PART NUMBER	QTY.
1	1/4-20X.5" FLATHEAD SCREW	12
2	1/4-20X1" SOCKET HEAD CAP SCREW	4
3	3/8-16 LOCKNUT	4
4	3/8-16X1.25" SOCKET HEAD CAP SCREW	4
5	3/8-16X6.5" HEX HEAD SCREW	2
6	3/8-16X8" HEX HEAD SCREW	2
7	5/16-18 NUT	3
8	5/16-18X2.5" SOCKET HEAD CAP SCREW	3
9	BLACK SPACER	32
10	BOLT SUPPORT HEX	1
11	BOLT SUPPORT RUNNER	1
12	ENDCAP	10
13	HEX 4.25	1
14	HEX 4.25 W/HOLES	1
15	HEX 5.875	2
16	HYDRAULIC CYLINDERS	2
17	HYDRAULIC SPACER LONG	1
18	HYDRAULIC SPACER LONG W/GROOVE	1
19	HYDRAULIC SPACER SHORT	3
20	HYDRAULIC SPACER SHORT W/GROOVE	3
21	LADDER FLI	1
22	LADDER FLO	1
23	LADDER FRI	1
24	LADDER FRO	1
25	LADDER RLI	1
26	LADDER RLO	1
27	LADDER RRI	1
28	LADDER RRO	1
29	LONG BAR LEFT HANDLE	1
30	LONG BAR RIGHT HANDLE	1
31	LONGBAR	6
32	RFR BOTTOM PLATE	1
33	RISER LR	1
34	RISER RF	1
35	RISER RR	1
36	RUNNER 4.25	2
37	RUNNER 5.875	2
38	STEEL SUPPORT 7.750	1



PART LIBRARY

LONGBAR



X6

LONGBAR LEFT HANDLE



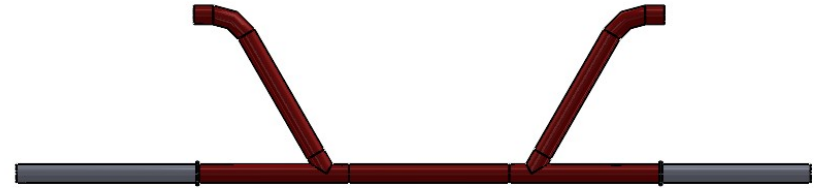
X1

LONGBAR RIGHT HANDLE

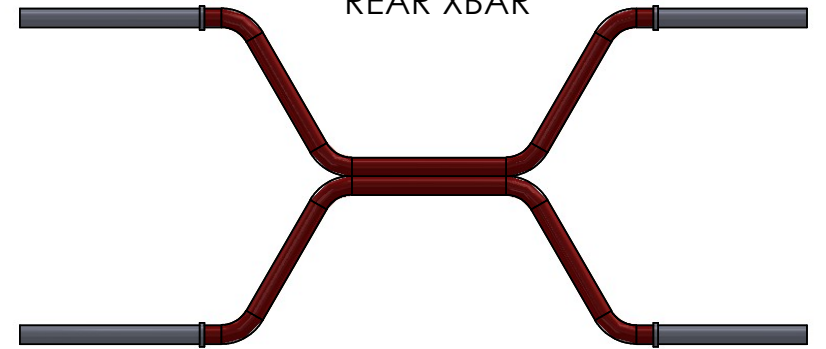


X1

FRONT XBAR



REAR XBAR



LADDER FLO



X1

LADDER FRO



X1

LADDER FLI



X1

LADDER FRI



X1

LADDER RLI



X1

LADDER RRI



X1

LADDER RLO



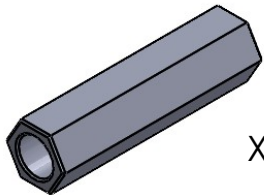
X1

LADDER RRO



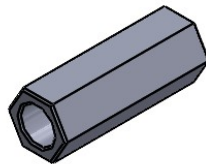
X1

HEX 5.875



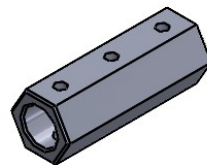
X2

HEX 4.25



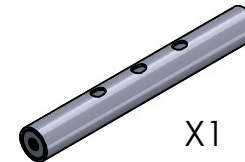
X1

HEX 4.25 W/HOLES



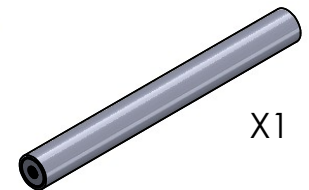
X1

TOP RIGHT BAR



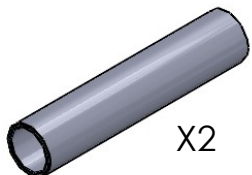
X1

TOP LEFT BAR



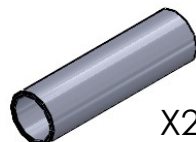
X1

TUBING SPACER 5.875



X2

TUBING SPACER 4.25



X2

ENDCAPS



X10

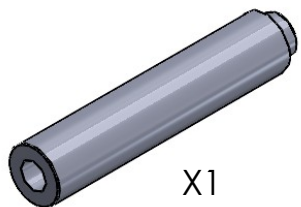
BLACK SPACER



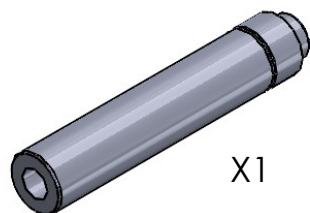
X32

PART LIBRARY

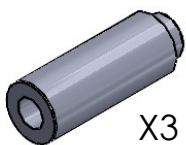
CYLINDER SPACER LONG



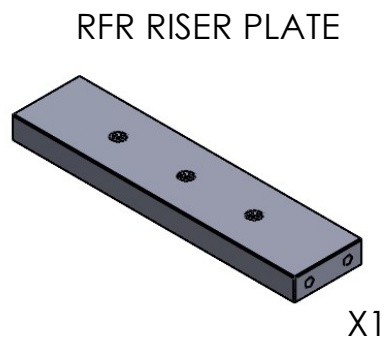
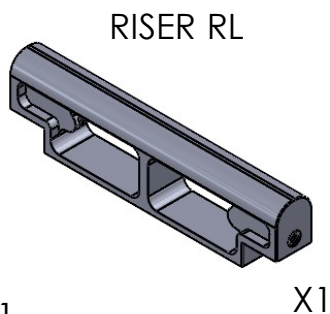
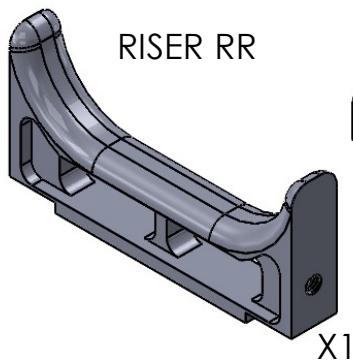
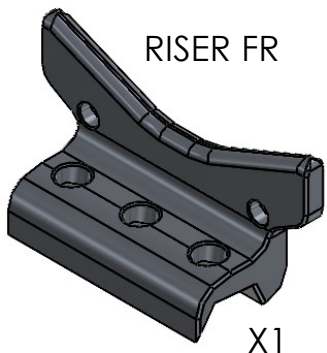
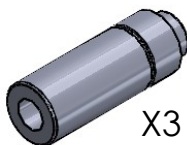
CYLINDER SPACER W/GROOVE LONG



CYLINDER SPACE SHORT



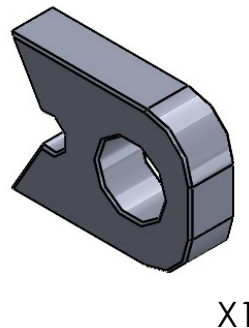
CYLINDER SPACER W/GROOVE SHORT



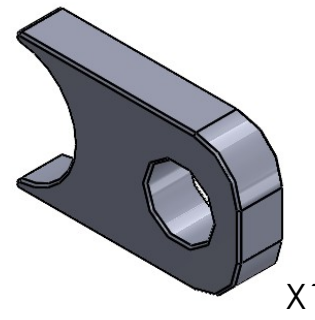
HYDRAULIC SPACERS



HEX BOLT SUPPORT



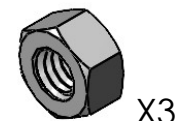
TUBING BOLT SUPPORT



1/4-20X.5" FLAT HEAD CAP SCREW



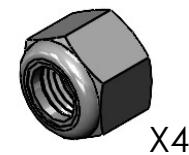
3/8-18 HEX NUT



1/4-20X1" SOCKET HEAD CAP SCREW



5/16-18 LOCKNUT



3/8-16X6.5" HEX SCREW



5/16-16X2.5" SOCKET HEAD CAP SCREW



3/8-16X8" HEX SCREW

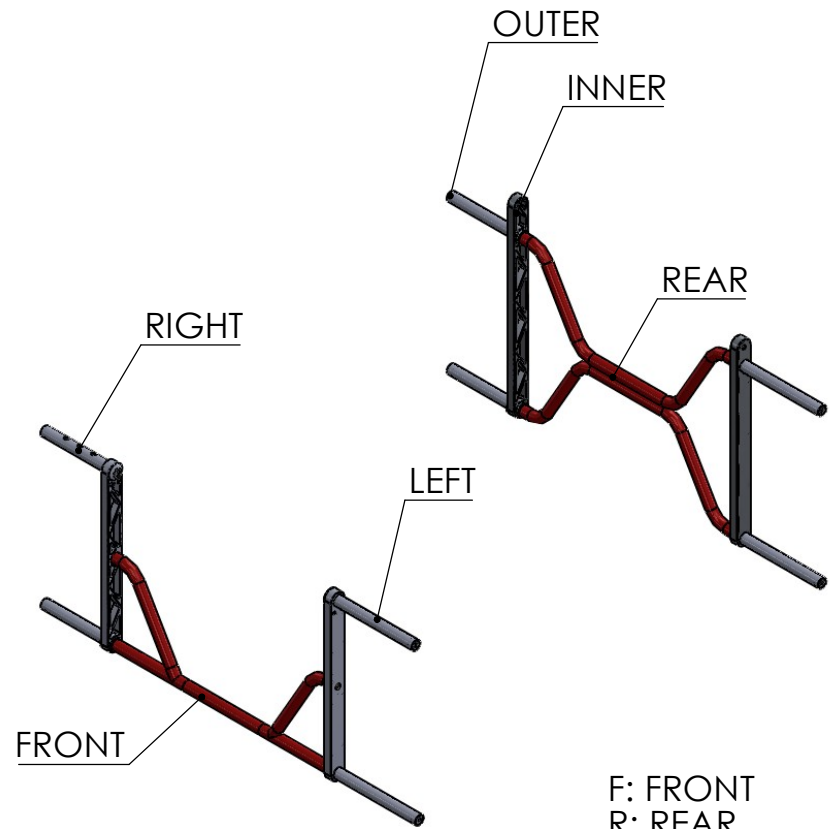


3/8-16X1.25" SOCKET HEAD CAP SCREW



BEFORE YOU BUILD

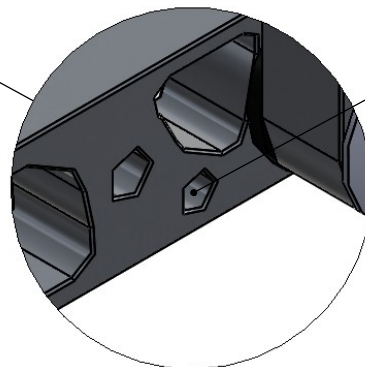
- THIS DOES REQUIRE GREASE. ANY CHASSIS OR BEARING GREASE
- SORT PARTS TO MAKE IT EASIER TO ASSEMBLE
- GET ALL THE TOOLS YOU NEED
 - 1/4 ALLEN WRENCH KEY
 - 3/16 ALLEN WRENCH KEY
 - 5/32 ALLEN WRENCH KEY
 - 1/8 ALLEN WRENCH KEY
 - 1/2 WRENCH
 - 9/16 WRENCH
 - 1/4 WRENCH
 - RUBBER Mallet
 - FLATHEAD SCREWDRIVER ANY SMALL SIZE
- MAKE SURE YOU HAVE A CLEAN WORKSPACE
- BE SURE TO GREASE BLACK SPACERS AND LADDER OPENINGS



F: FRONT
 R: REAR
 R: RIGHT
 L: LEFT
 O: OUTER
 I: INNER

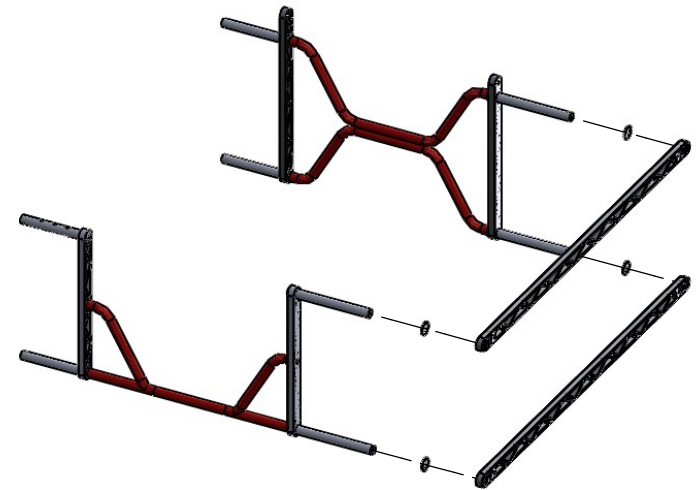
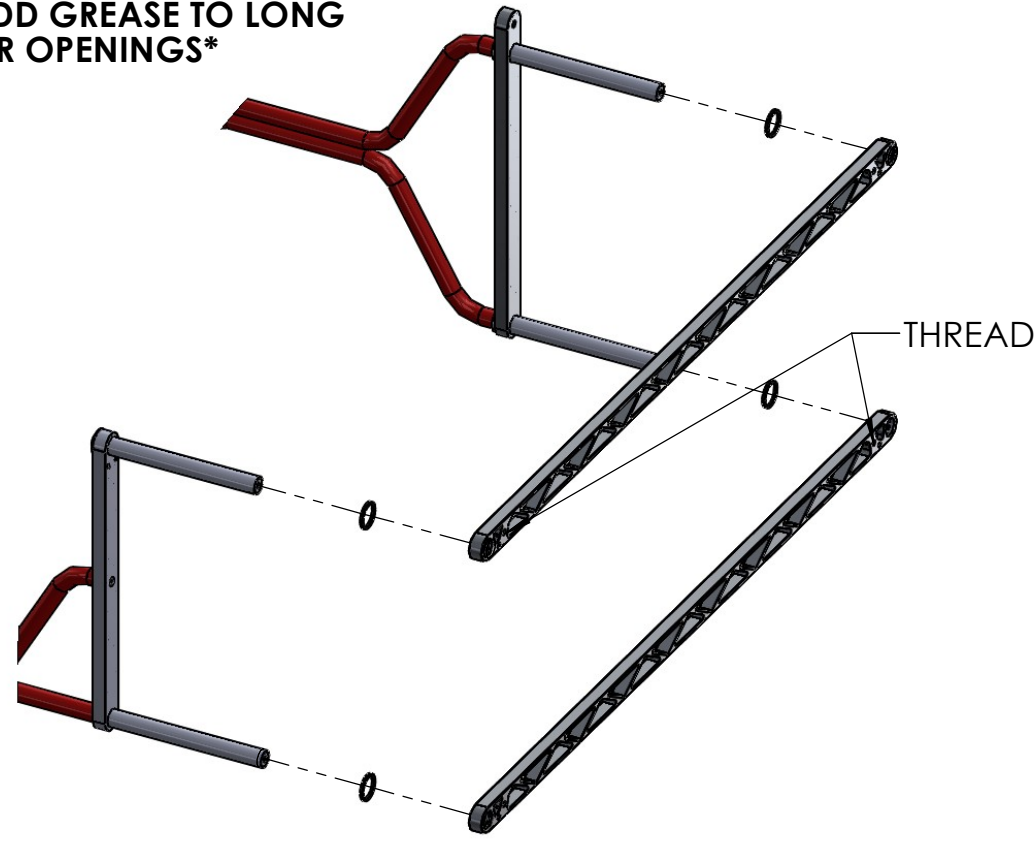
EXAMPLE
 FLO: FRONT LEFT OUTER

**NOT INCLUDING IN STEP
 ONLY FOR VISUAL PURPOSES**



**THIS HOLE IN ALL STEPS
 NEEDS BE ASSEMBLE
 TOWARDS THE BOTTOM**

ADD GREASE TO LONG BAR OPENINGS



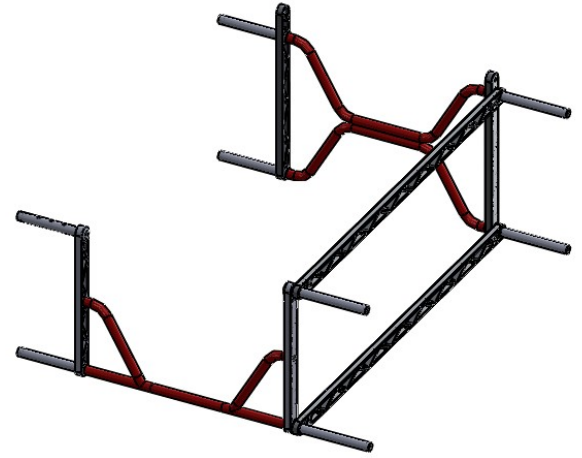
LONGBAR
BLACK SPACER

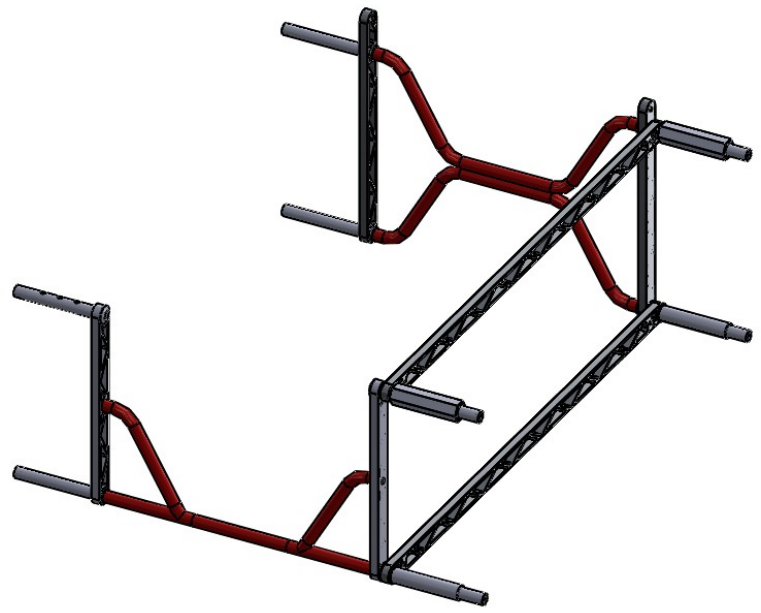
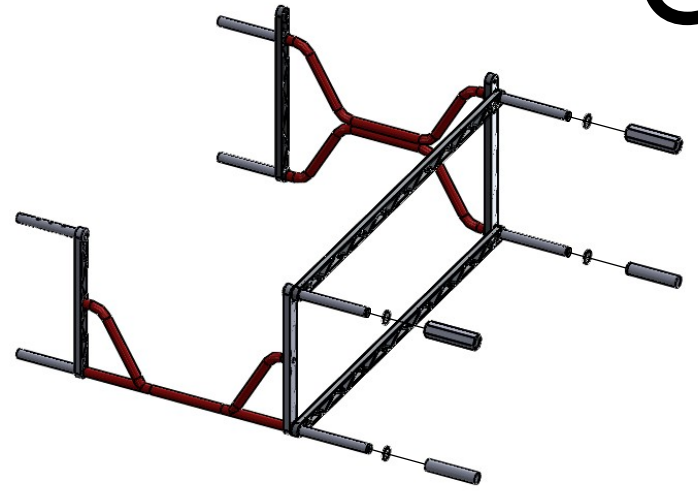
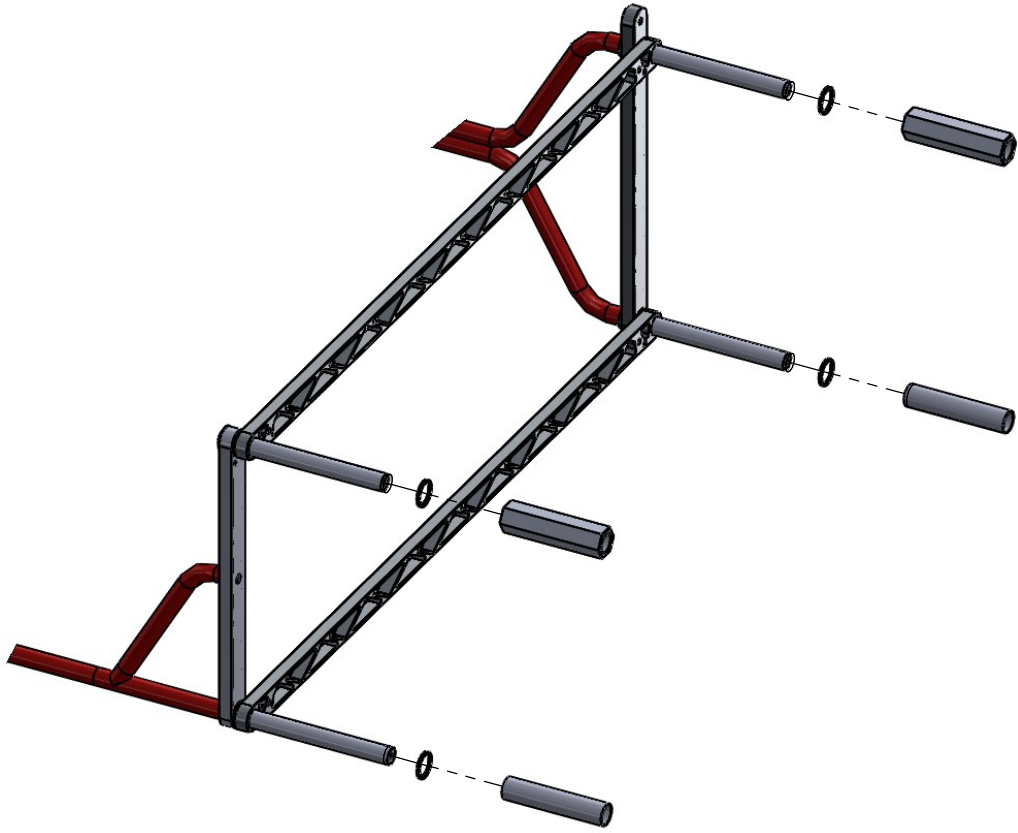


x4

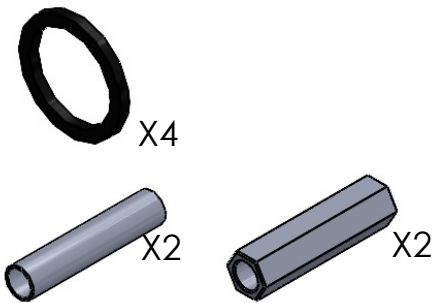


x2

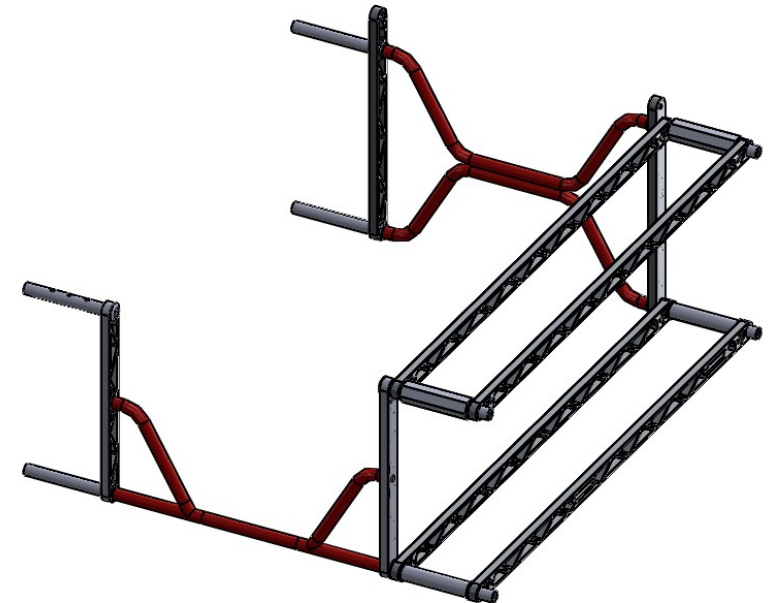
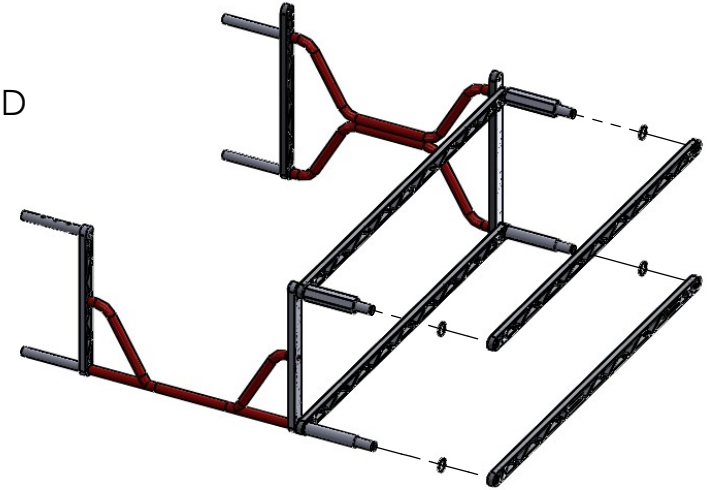
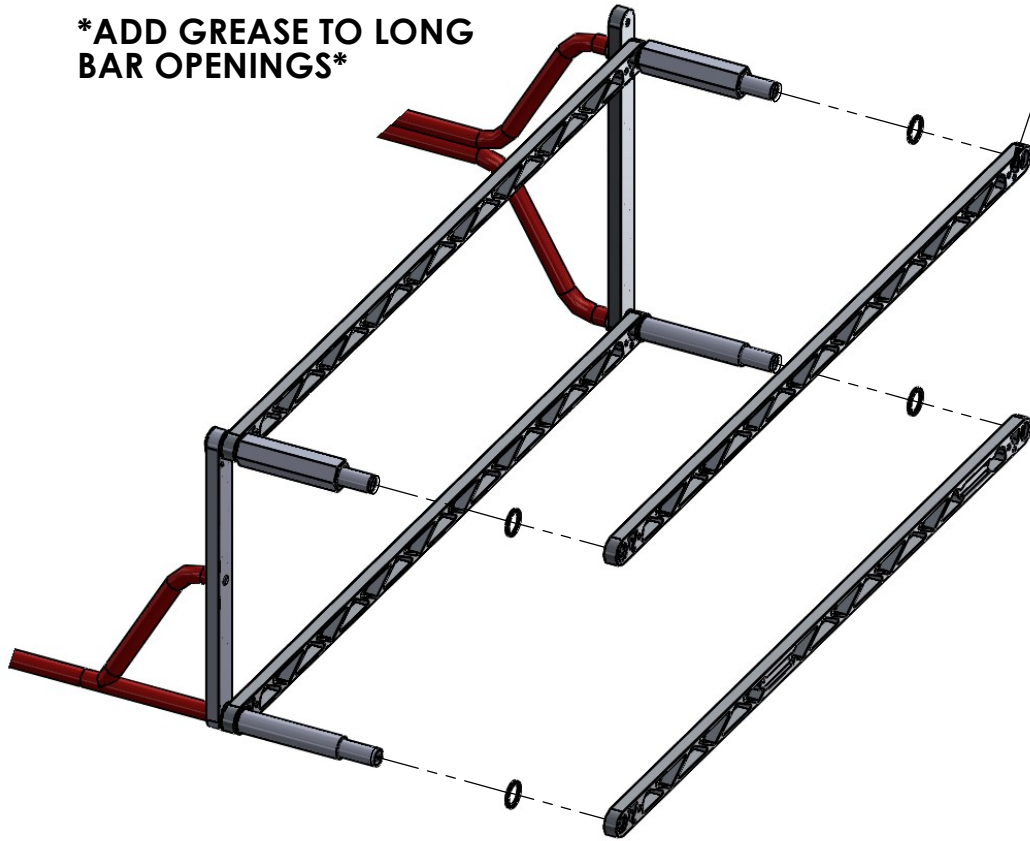




BLACK SPACER
HEX 5.875
TUBING SPACER 5.875



ADD GREASE TO LONG BAR OPENINGS



BLACK SPACER
LONGBAR
LONGBAR LEFT HANDLE



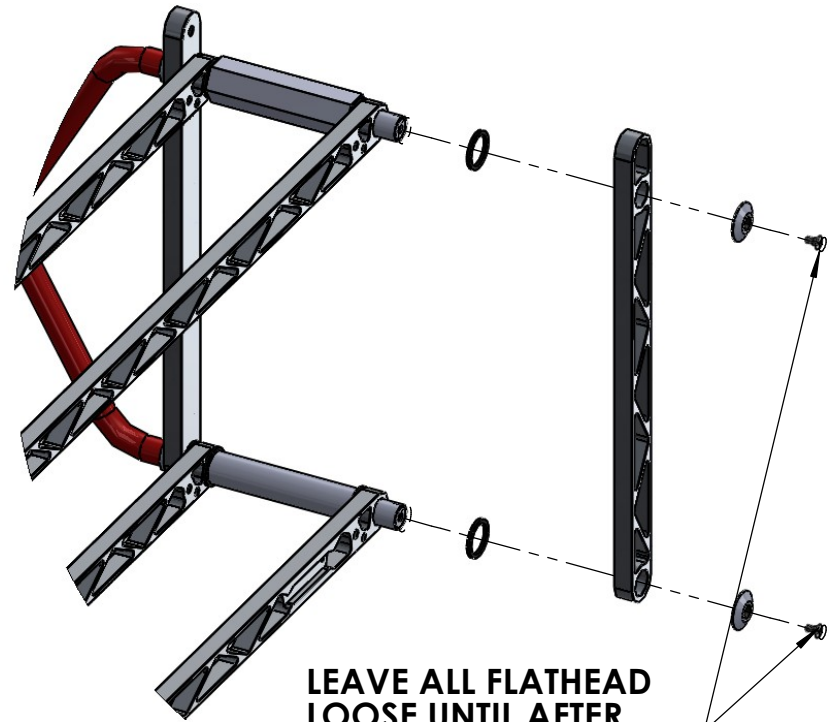
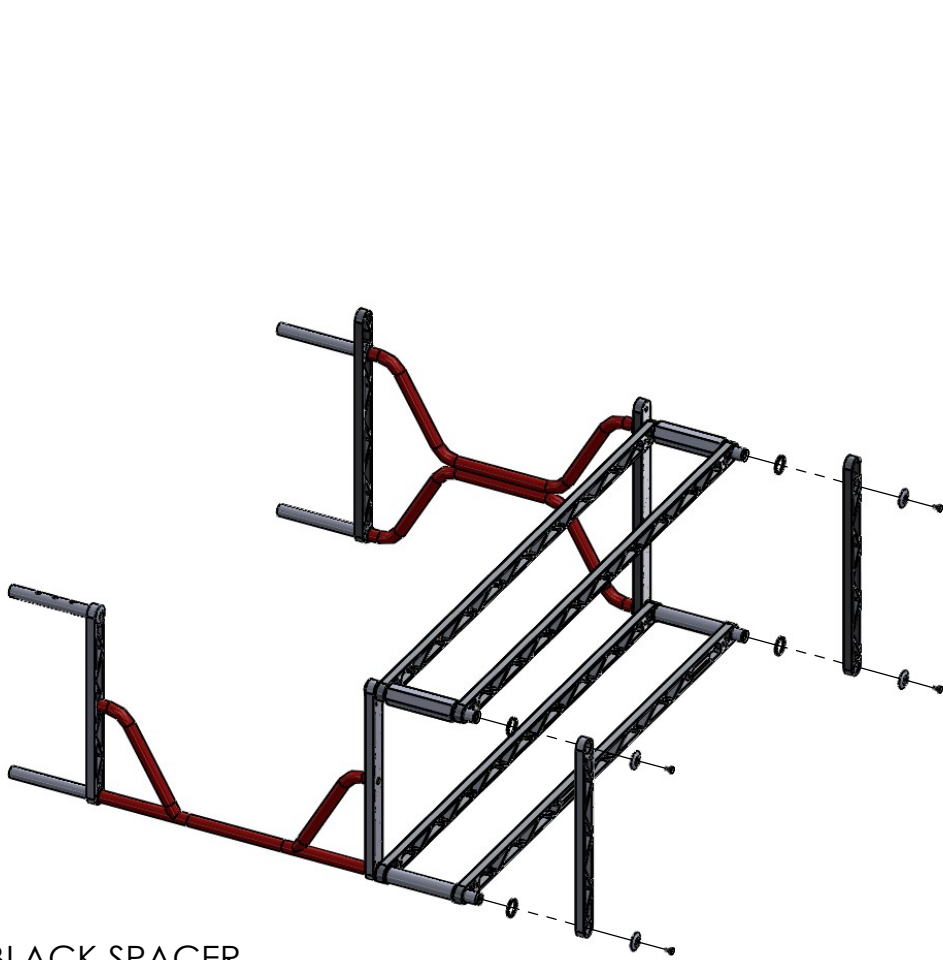
X4



X1

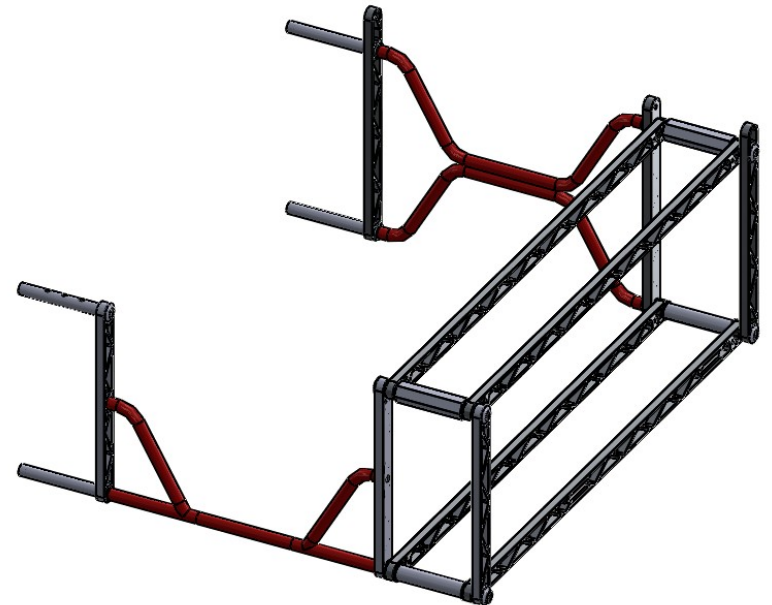
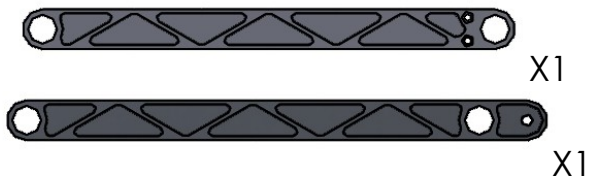
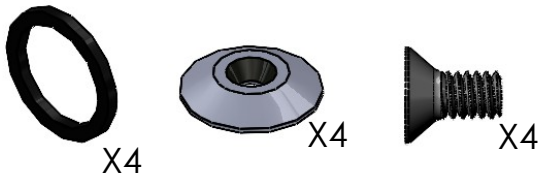


X1



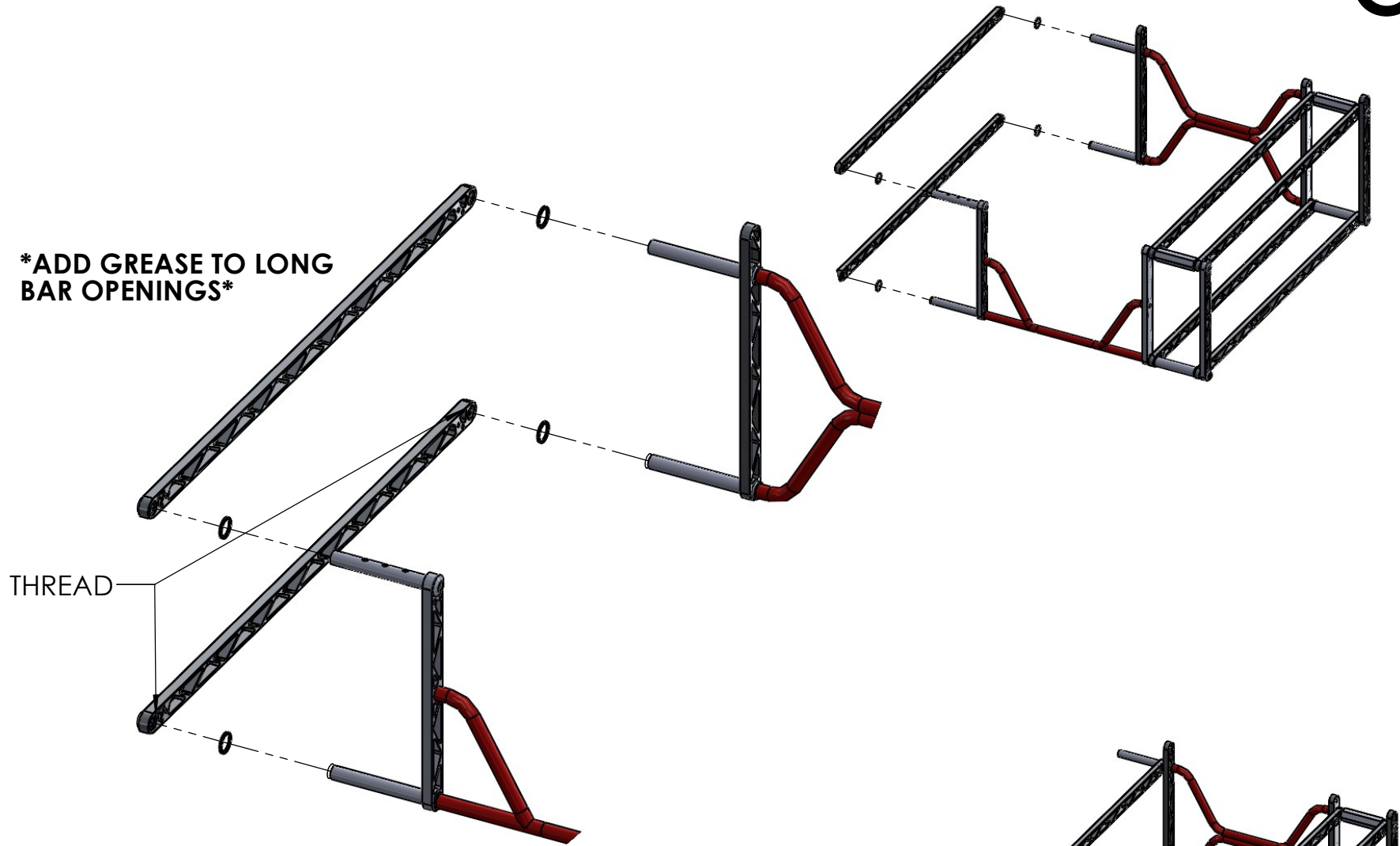
**LEAVE ALL FLATHEAD
LOOSE UNTIL AFTER
CYLINDERS ARE
FULLY INSTALLED**

BLACK SPACER
ENDCAP
1/4-20X.5" FLAT HEAD SCREW
RLO LADDER
FLO LADDER



***ADD GREASE TO LONG
BAR OPENINGS***

THREAD



BLACK SPACER
LONGBAR

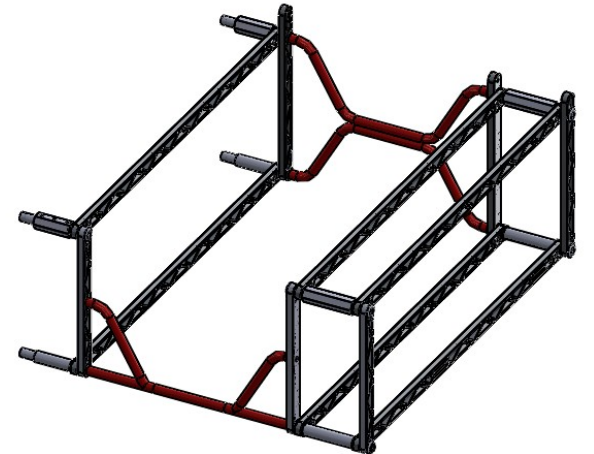
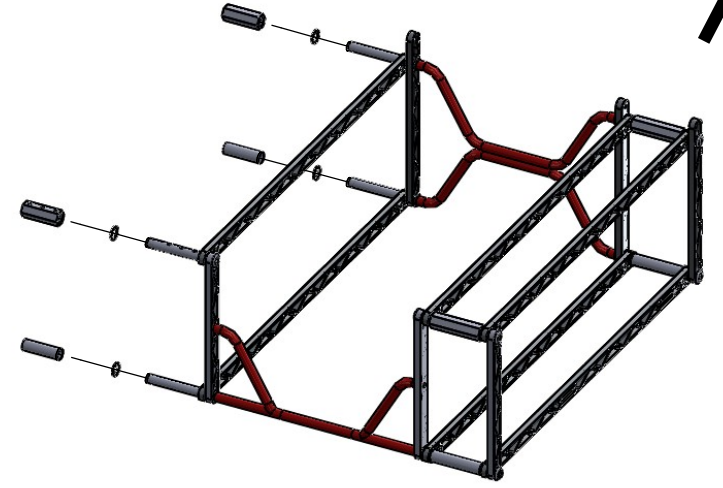
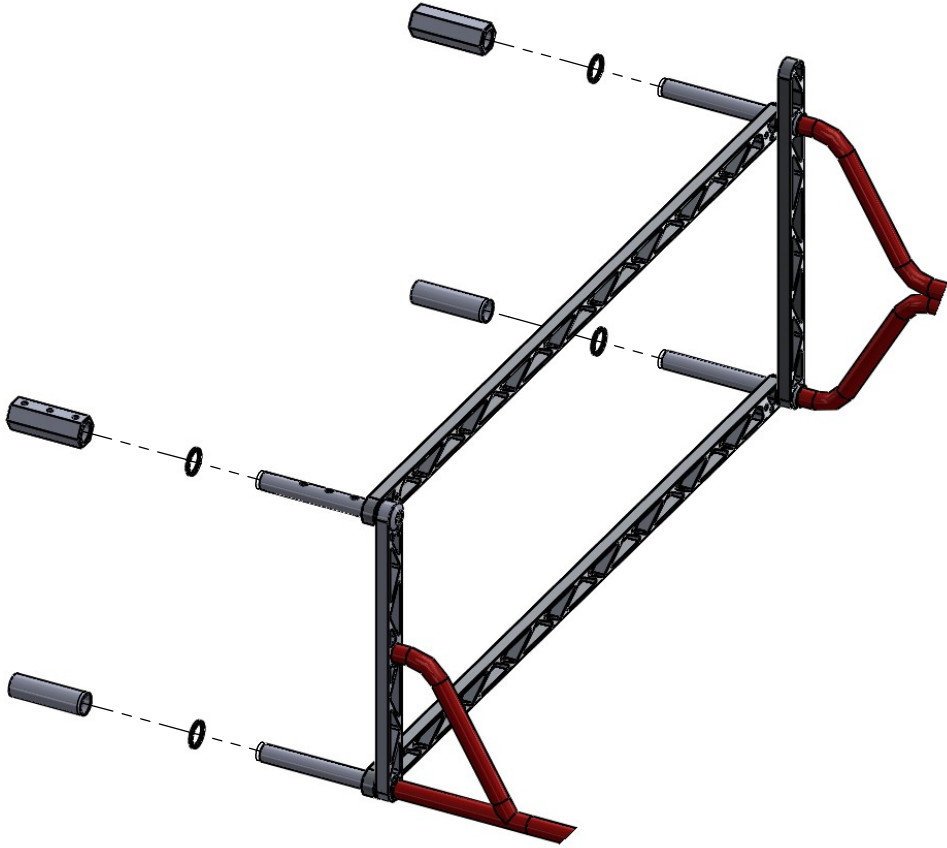


x4

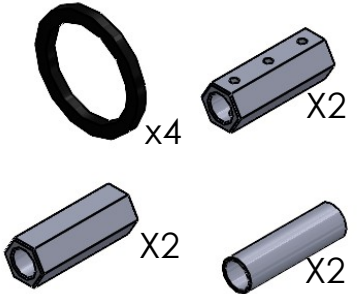


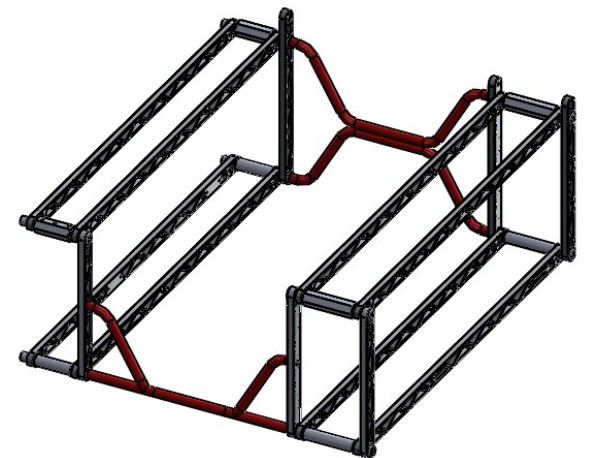
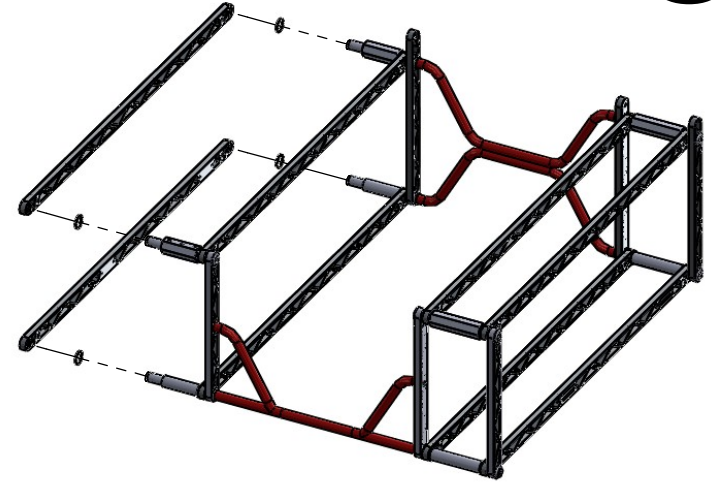
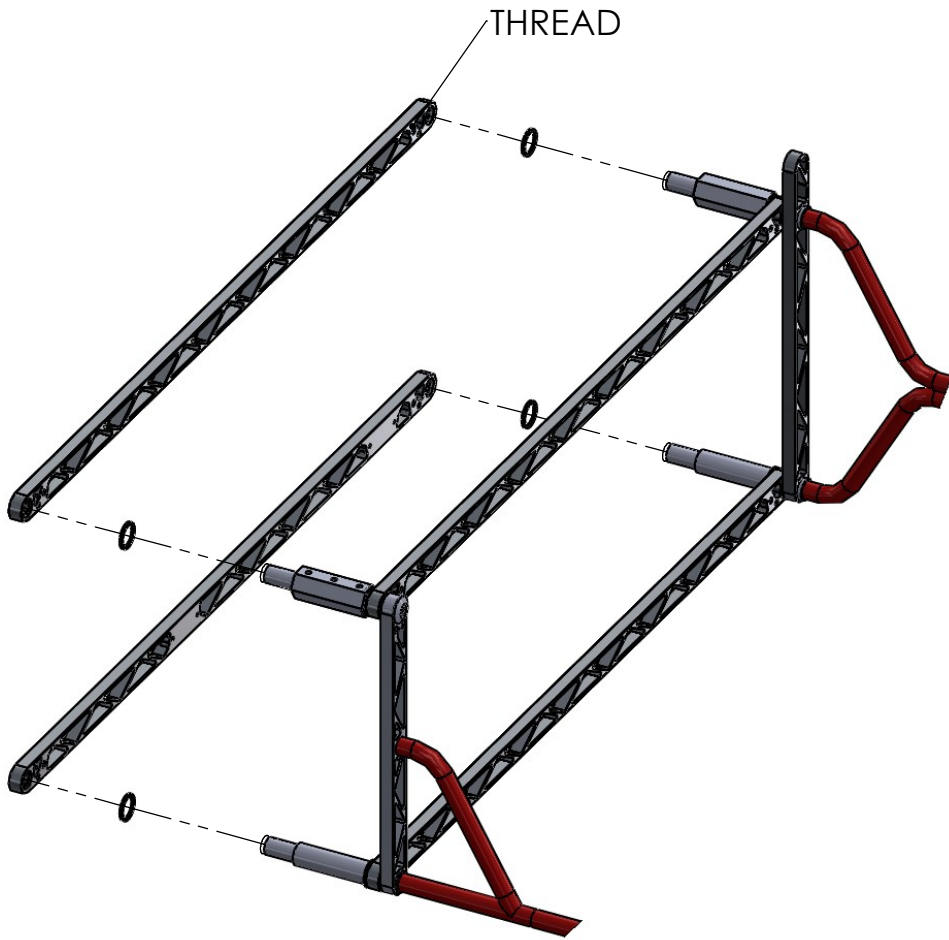
x2

7



BLACK SPACER
TUBING SPACER
HEX 4.25 W/HOLES
HEX 4.25





BLACK SPACER
LONGBAR
LONG BAR RIGHT HANDLE



X4

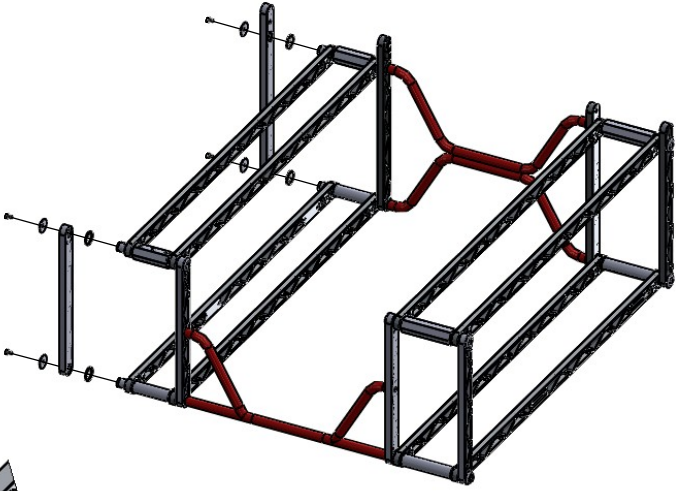
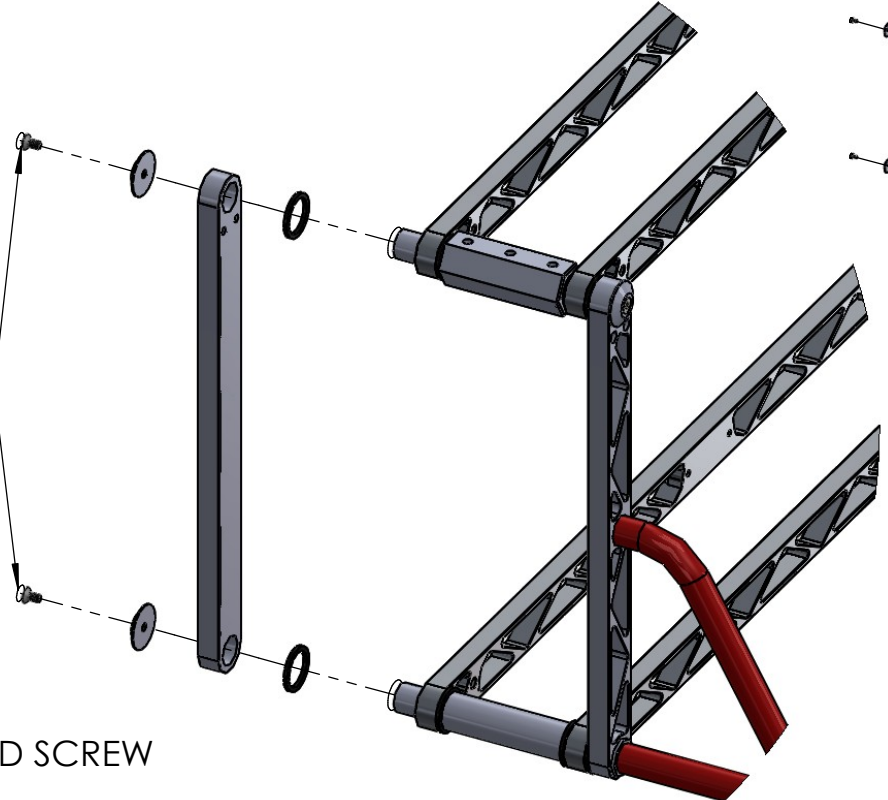


X1

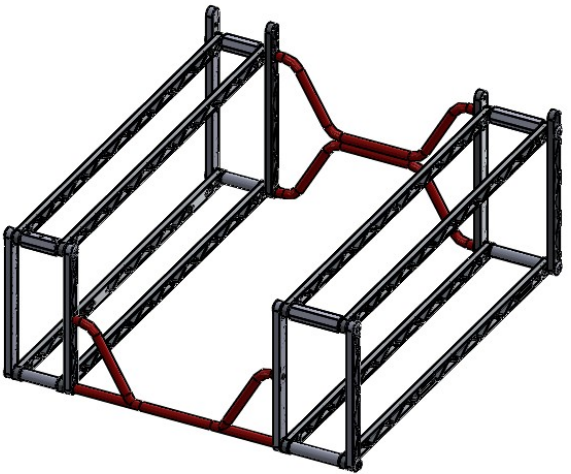
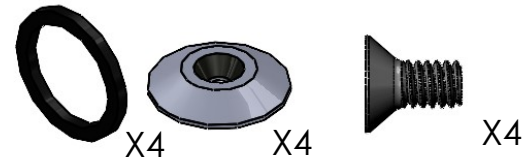


X1

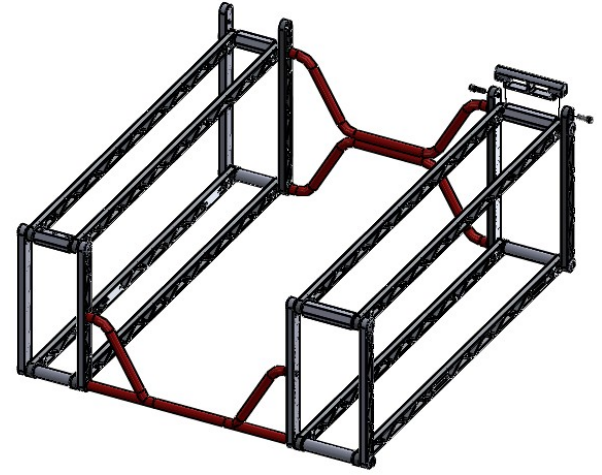
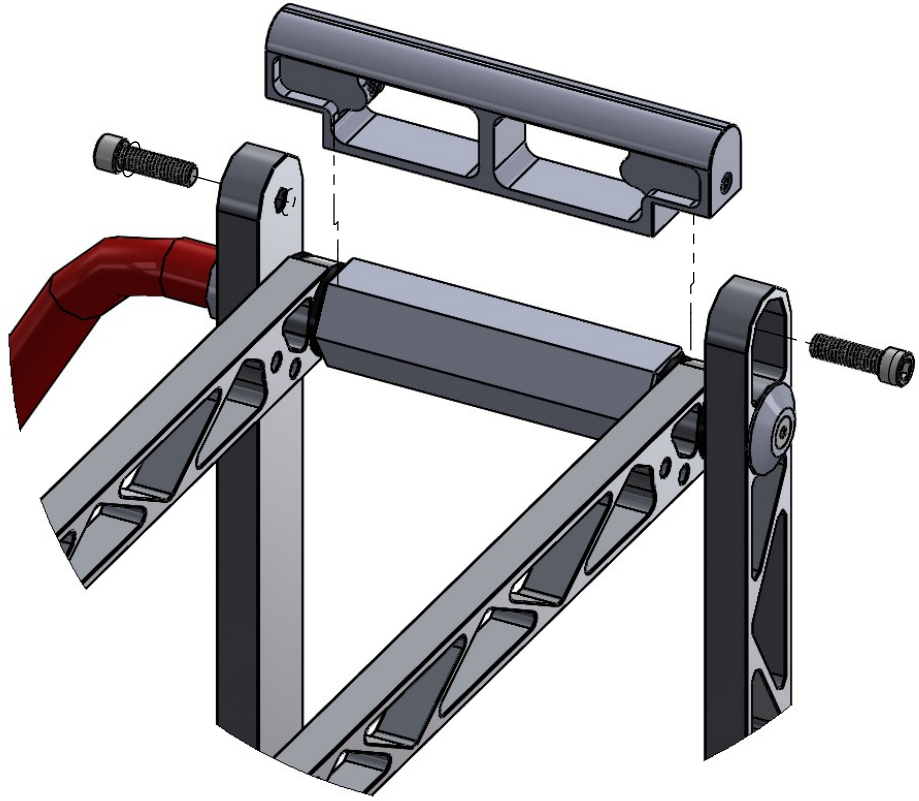
LEAVE ALL FLATHEAD
LOOSE UNTIL AFTER
CYLINDERS ARE
FULLY INSTALLED



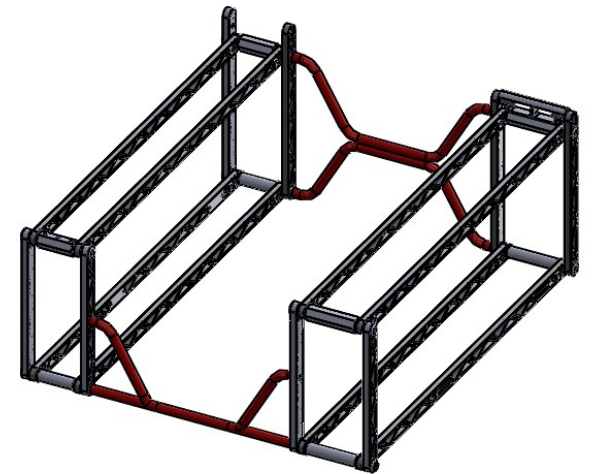
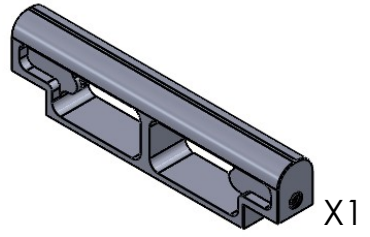
BLACK SPACER
END CAPS
1/4-20X.5" FLAT HEAD SCREW
LADDER FRO
LADDER RRO



ADD THREAD LOCKER

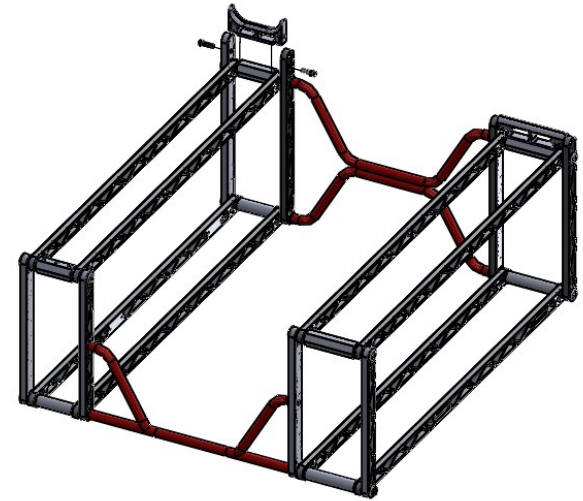
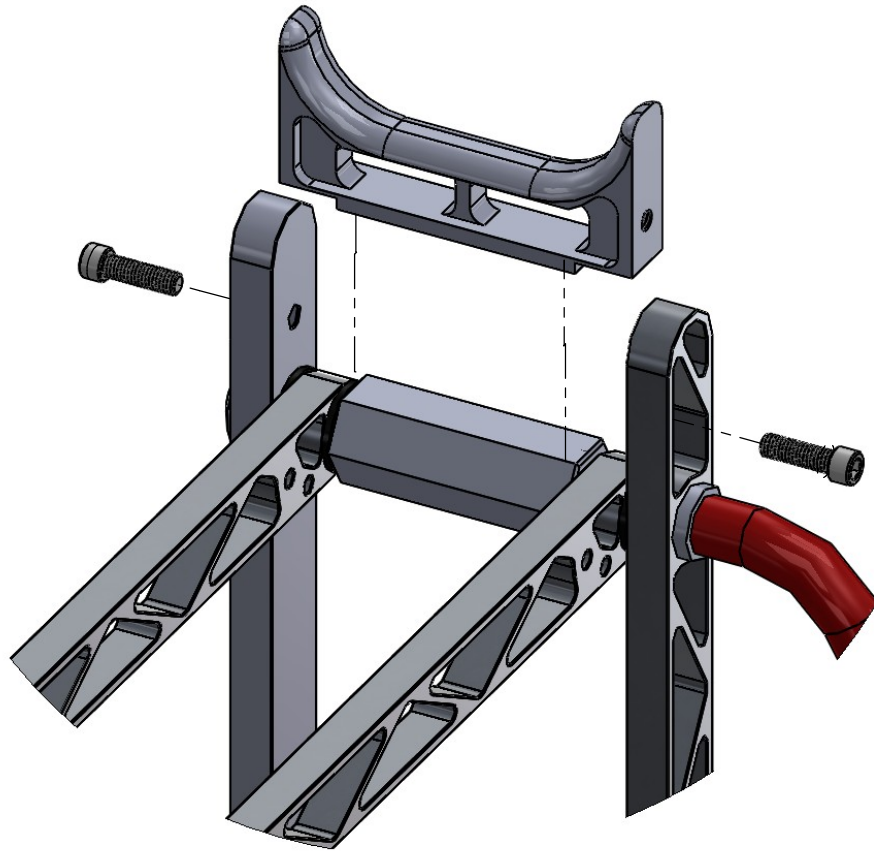


RISER LR
5/16-18X2" SOCKETHEAD CAP SCREW

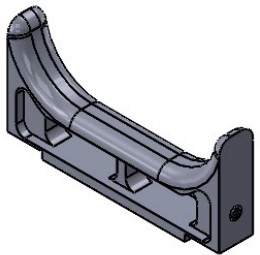


ADD THREAD LOCKER

11



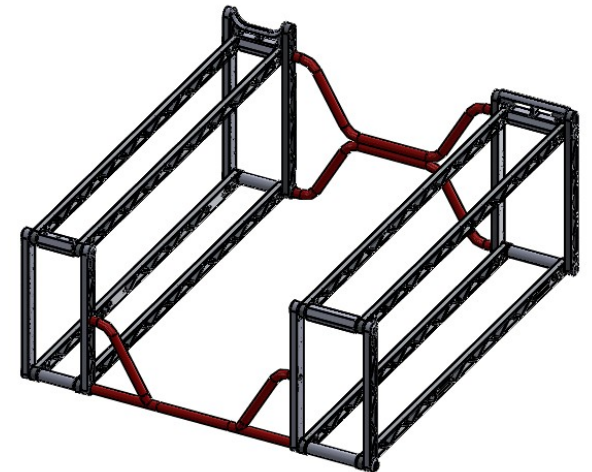
RISER RR
5/16-18X1.25" SOCKET HEAD CAP SCREW

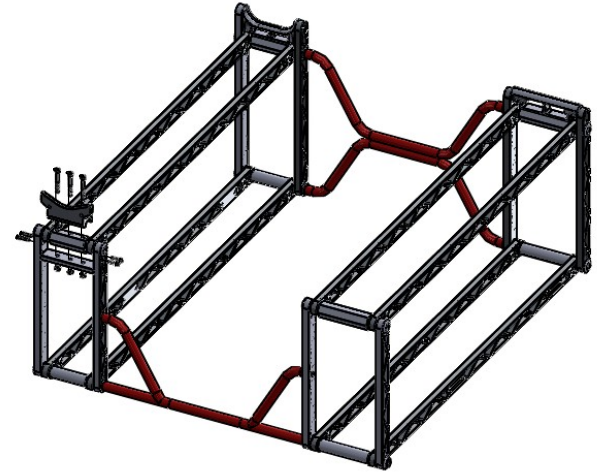
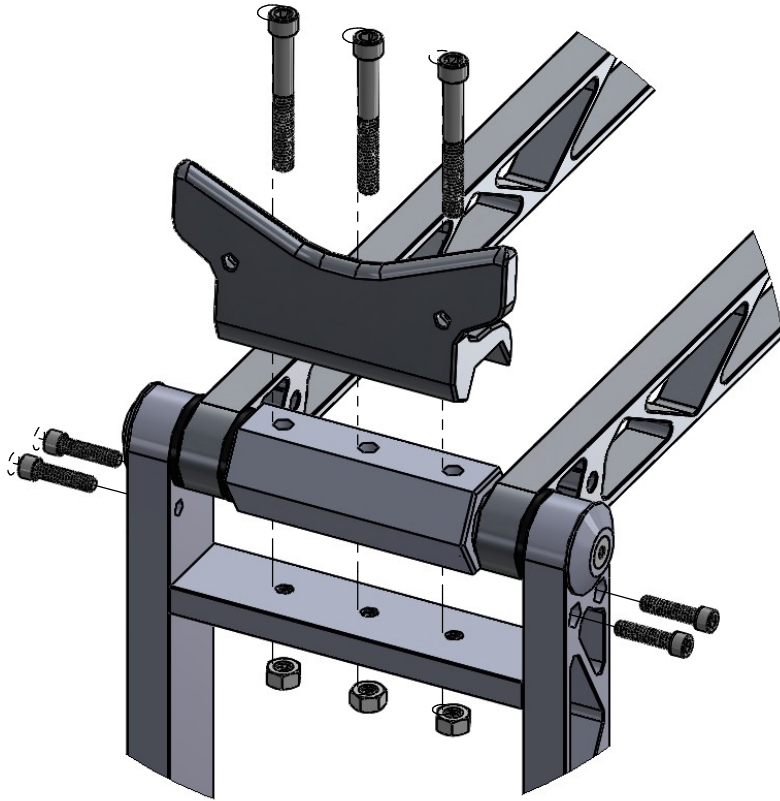


X1

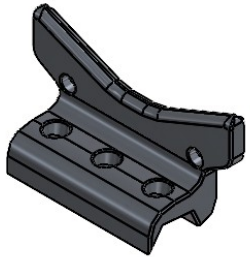


X2

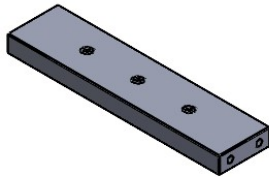




RISER RF
RFR BOTTOM PLATE
1/4-20X1" SOCKET HEAD CAP SCREW (1:1 SCALE)
5/16-18X2" SOCKET HEAD CAP SCREW(1:1 SCALE)
5/16-18X2" LOCKNUT (1:1 SCALE)



X1



X1



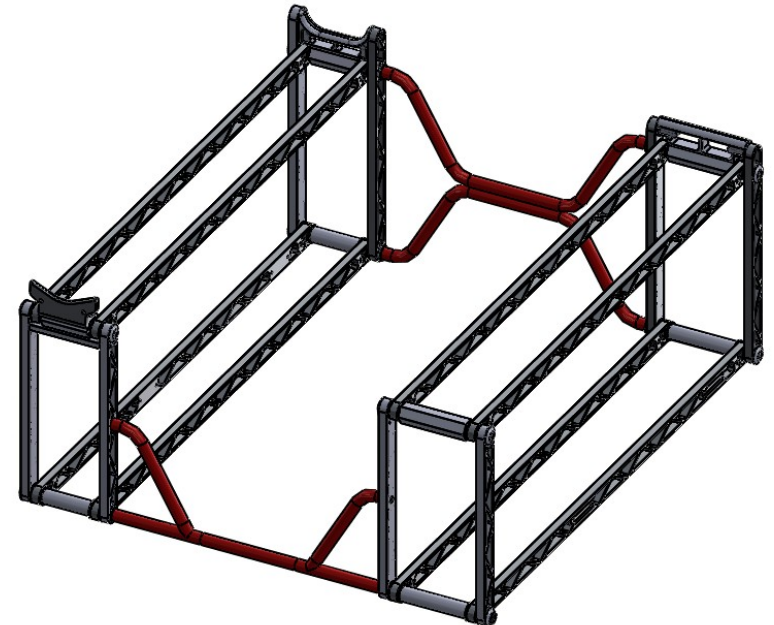
X3



X4

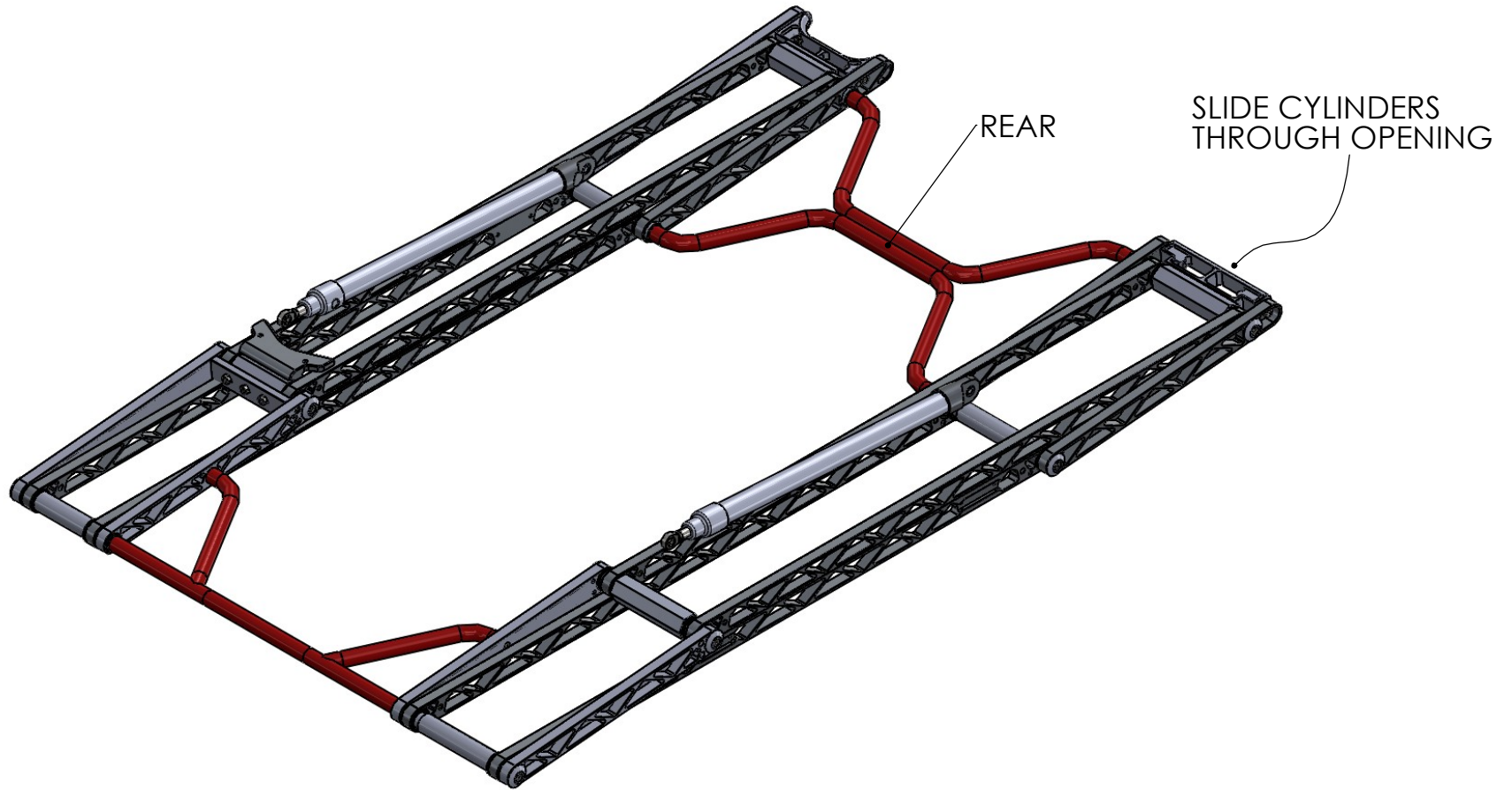


X3



LAY ASSEMBLY FLAT

13



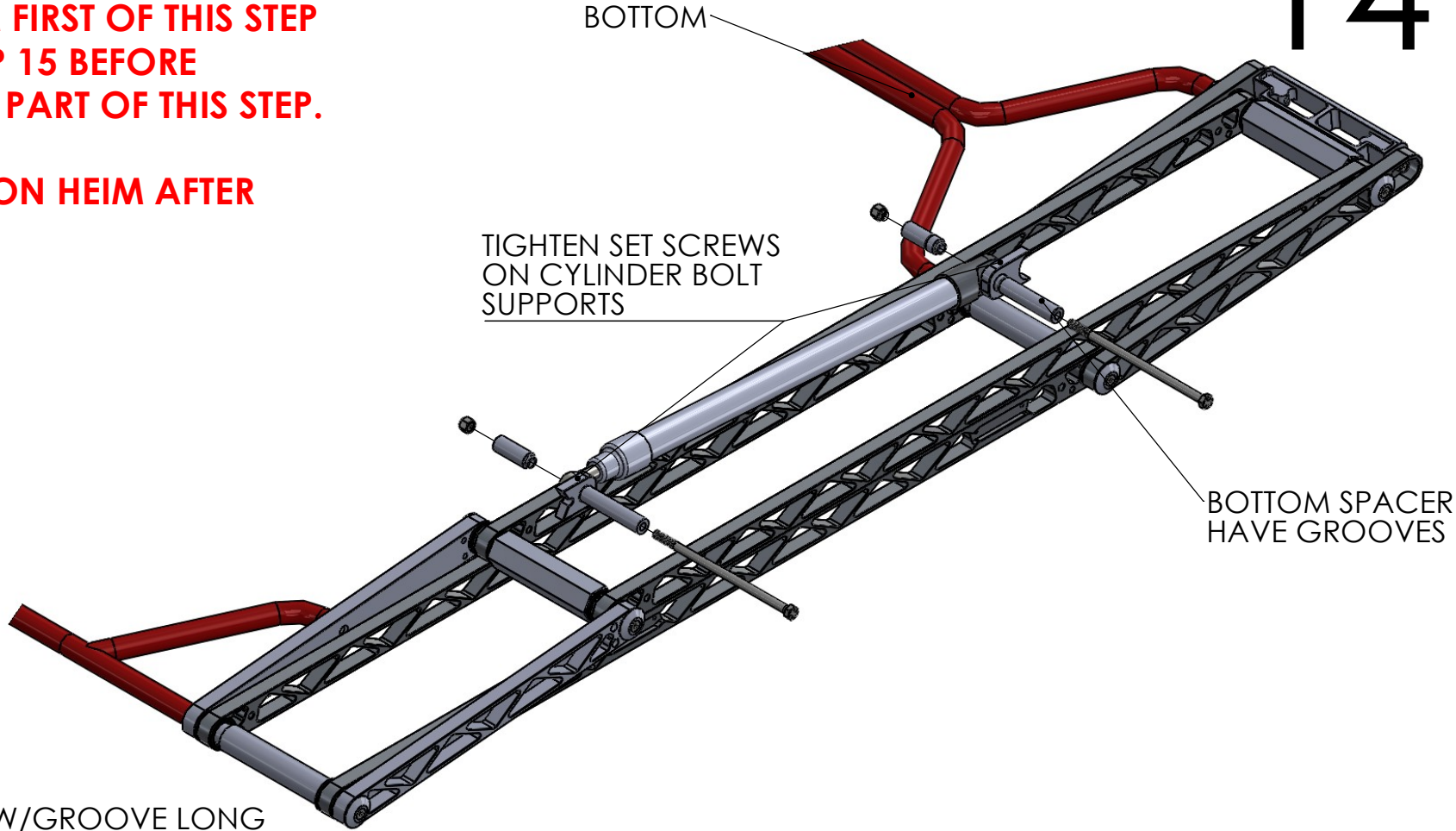
HYDRAULIC CYLINDER



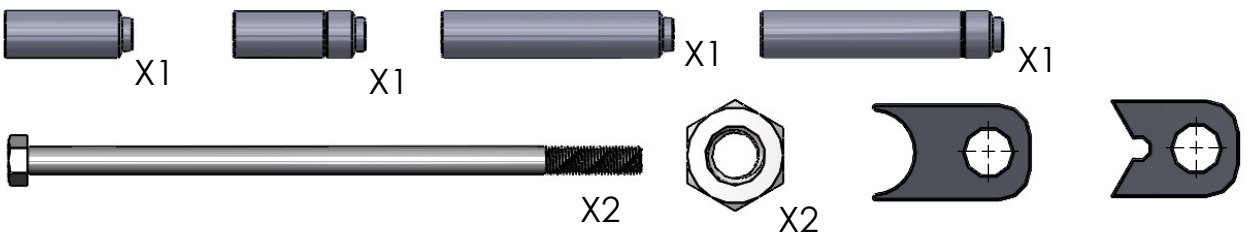
***THIS IS A CRITICAL STEP ***

ASSEMBLE BOTTOM FIRST OF THIS STEP THEN REFER TO STEP 15 BEFORE FINISHING THE TOP PART OF THIS STEP.

TIGHTEN JAM NUT ON HEIM AFTER SETTING LENGTH.



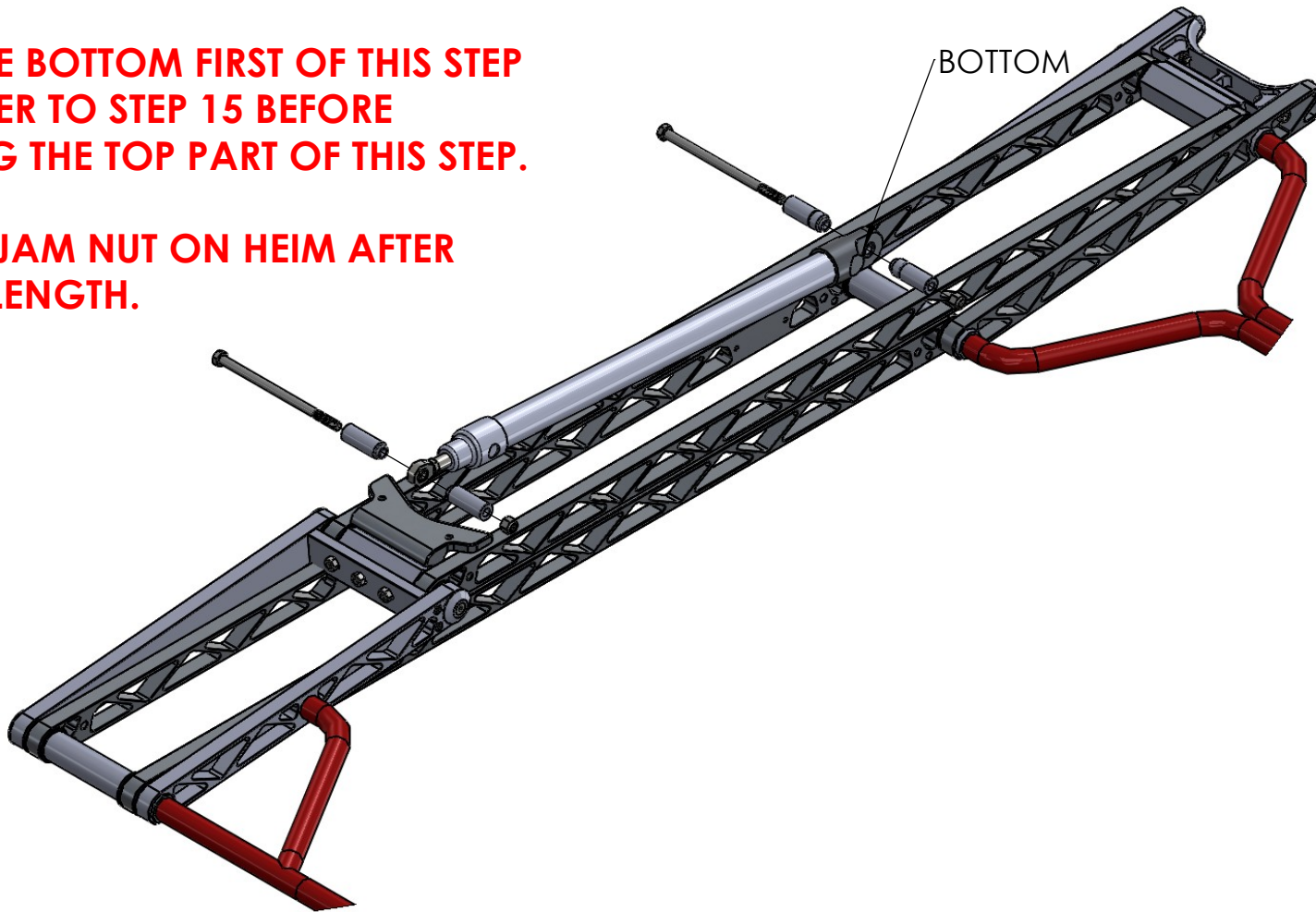
- HYDRAULIC SPACER W/GROOVE LONG
- HYDRAULIC SPACER W/GROOVE SHORT
- HYDRAULIC SPACER LONG
- HYDRAULIC SPACER SHORT
- 3/8-18X8" HEX HEAD SCREW
- 3/8 HEX NUT
- HEX BOLT SUPPORT
- SPACER BOLT SUPPORT



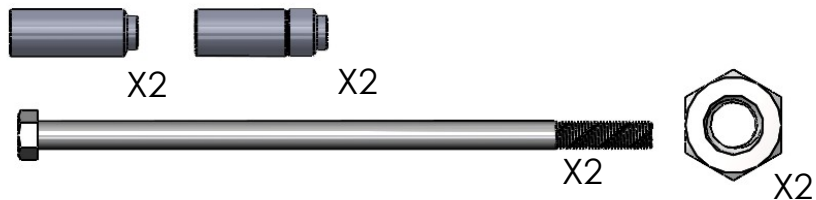
***THIS IS A CRITICAL STEP ***

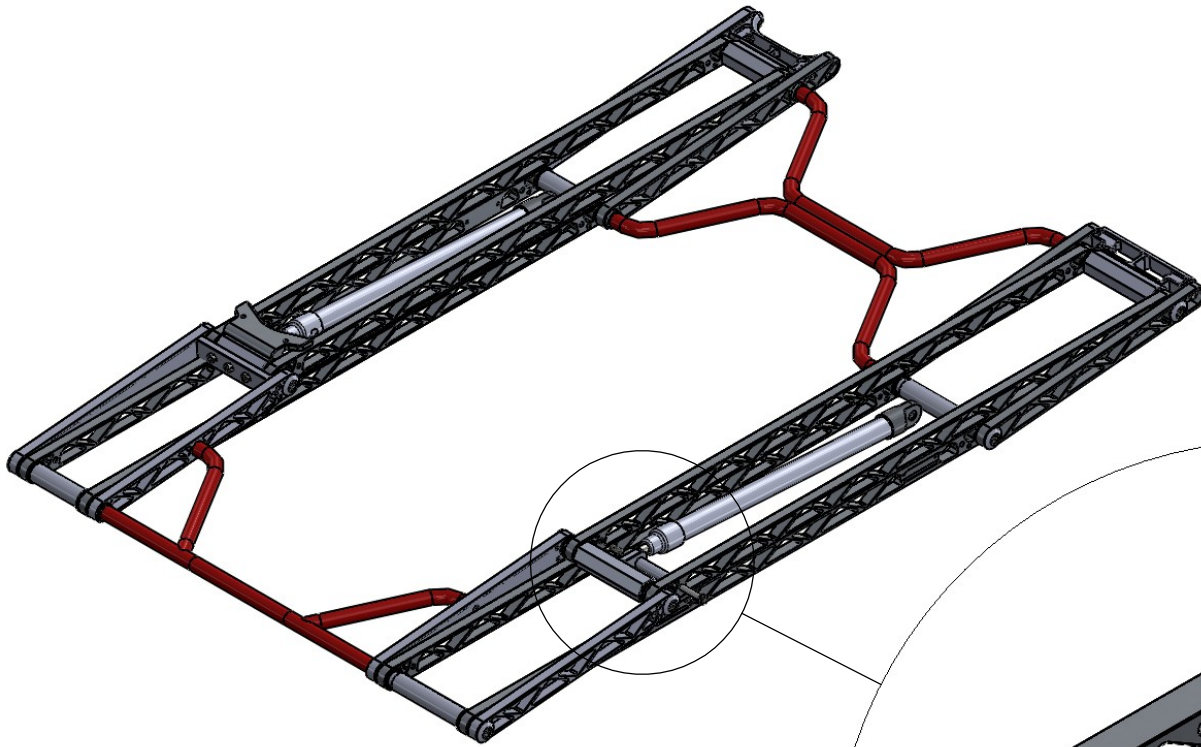
**ASSEMBLE BOTTOM FIRST OF THIS STEP
THEN REFER TO STEP 15 BEFORE
FINISHING THE TOP PART OF THIS STEP.**

**TIGHTEN JAM NUT ON HEIM AFTER
SETTING LENGTH.**



HYDRAULIC SPACER W/GROOVE SHORT
HYDRAULIC SPACER SHORT
3/8-18X6.5" HEX HEAD SCREW
3/8 HEX NUT



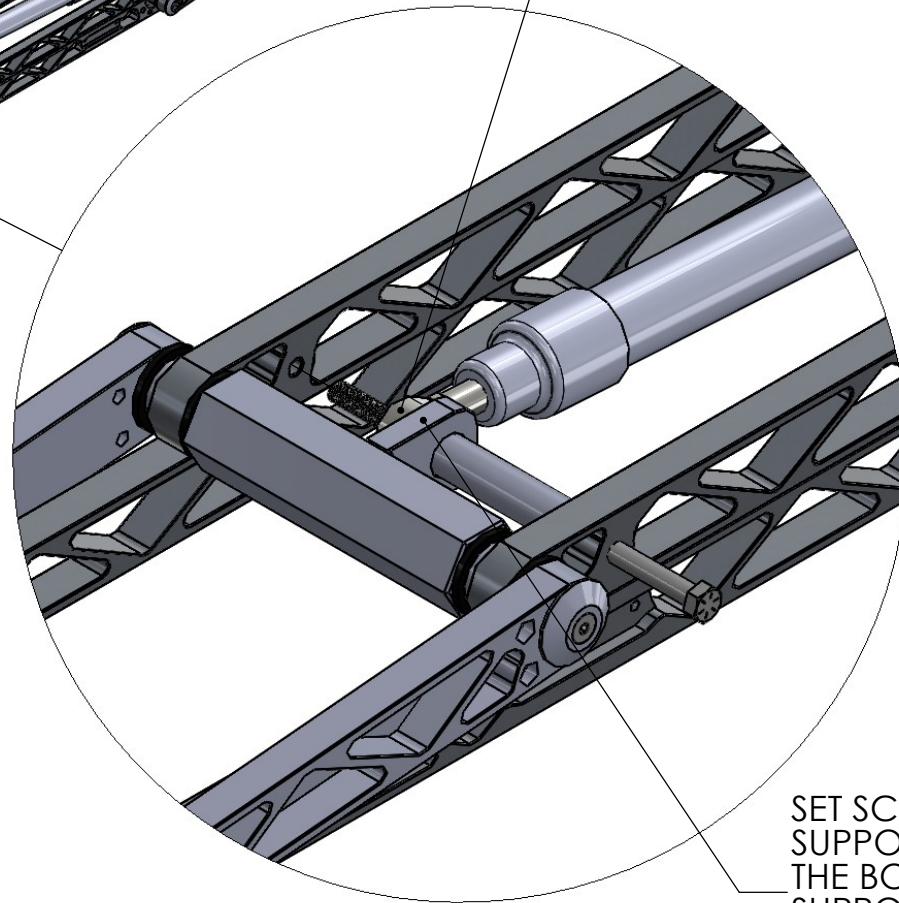


ADJUST HEIM TO LINE UP THE HEX HEAD SCREW WITH THE THREADED HOLE ON THE LONG BAR.

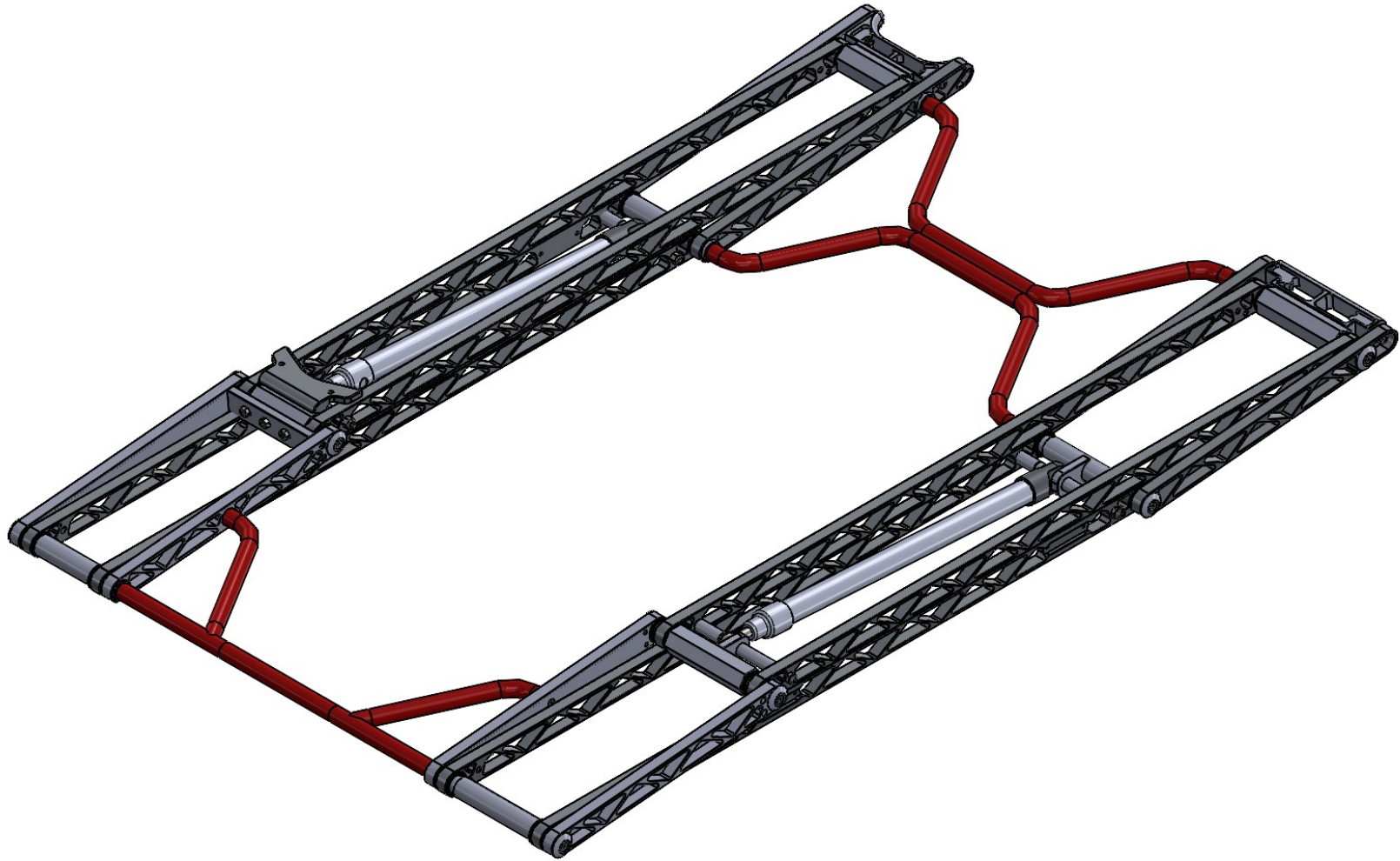
THIS IS A CRITICAL STEP, IF THE HEIM IS NOT FASTENED CORRECTLY THEN HEX HEAD BOLTS WILL BEND.

FULLY RETRACT CYLINDER (SHORTEST LENGTH POSSIBLE) BEFORE SETTING THE HEIM LENGTH SO THE BOLT WILL LINE UP.

****DO NOT PULL CYLINDER ROD OUT.****



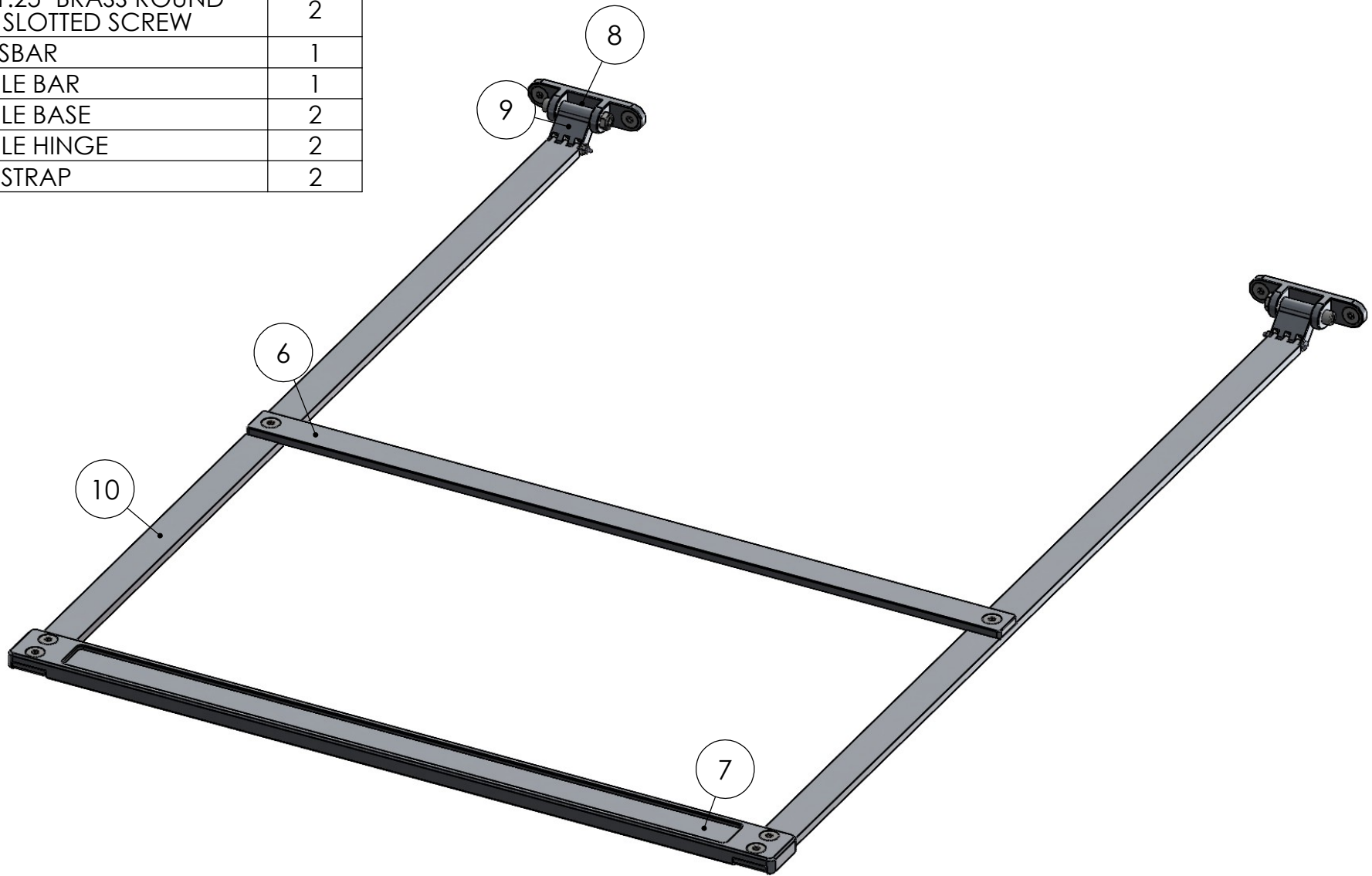
SET SCREW ON BOLT SUPPORTS NEEDS TO FACE THE BOTTOM. THE BOLT SUPPORT ALSO NEEDS TO ALIGN IN THE MIDDLE OF THE HEX HEAD SCREW.

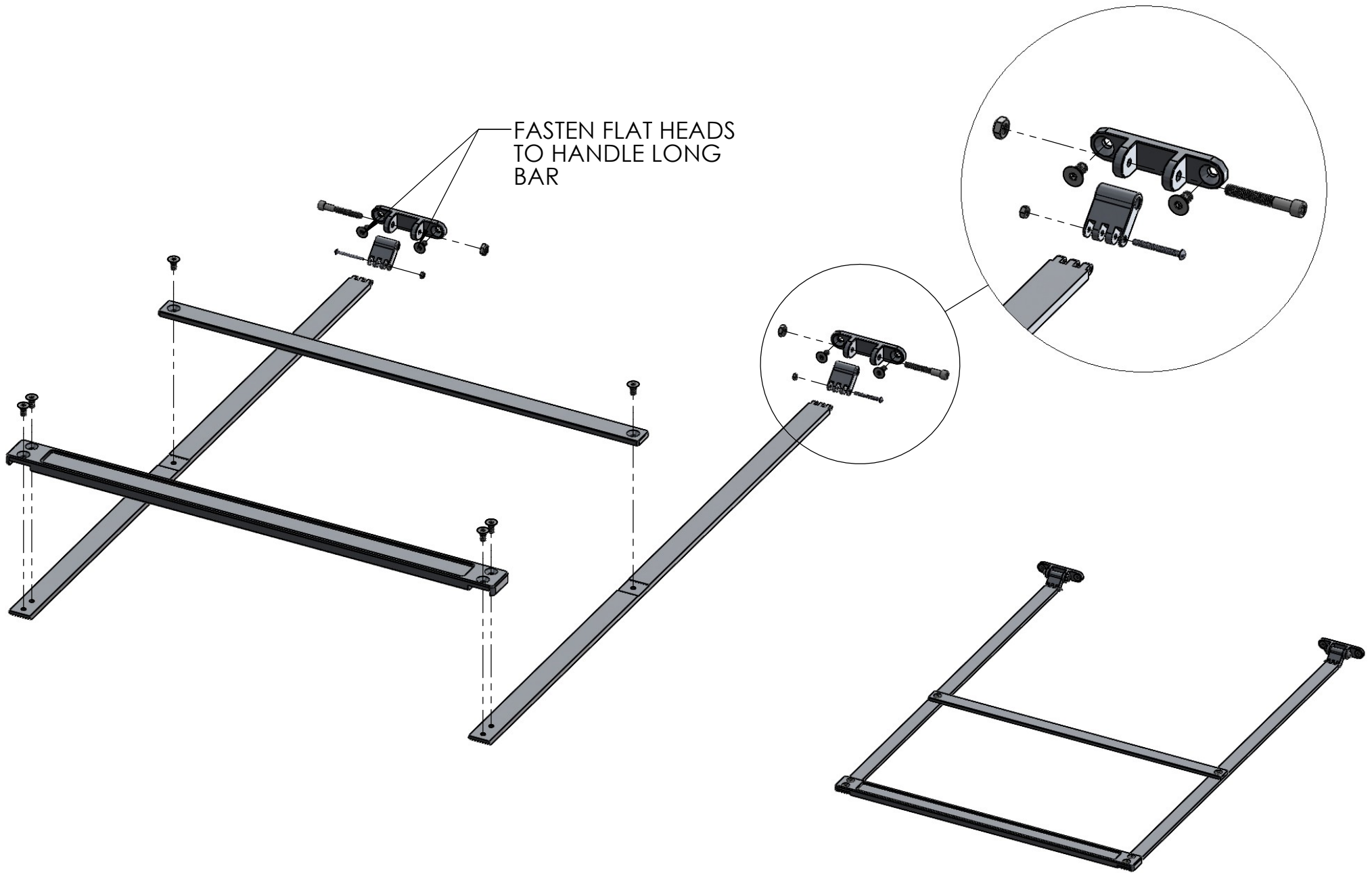


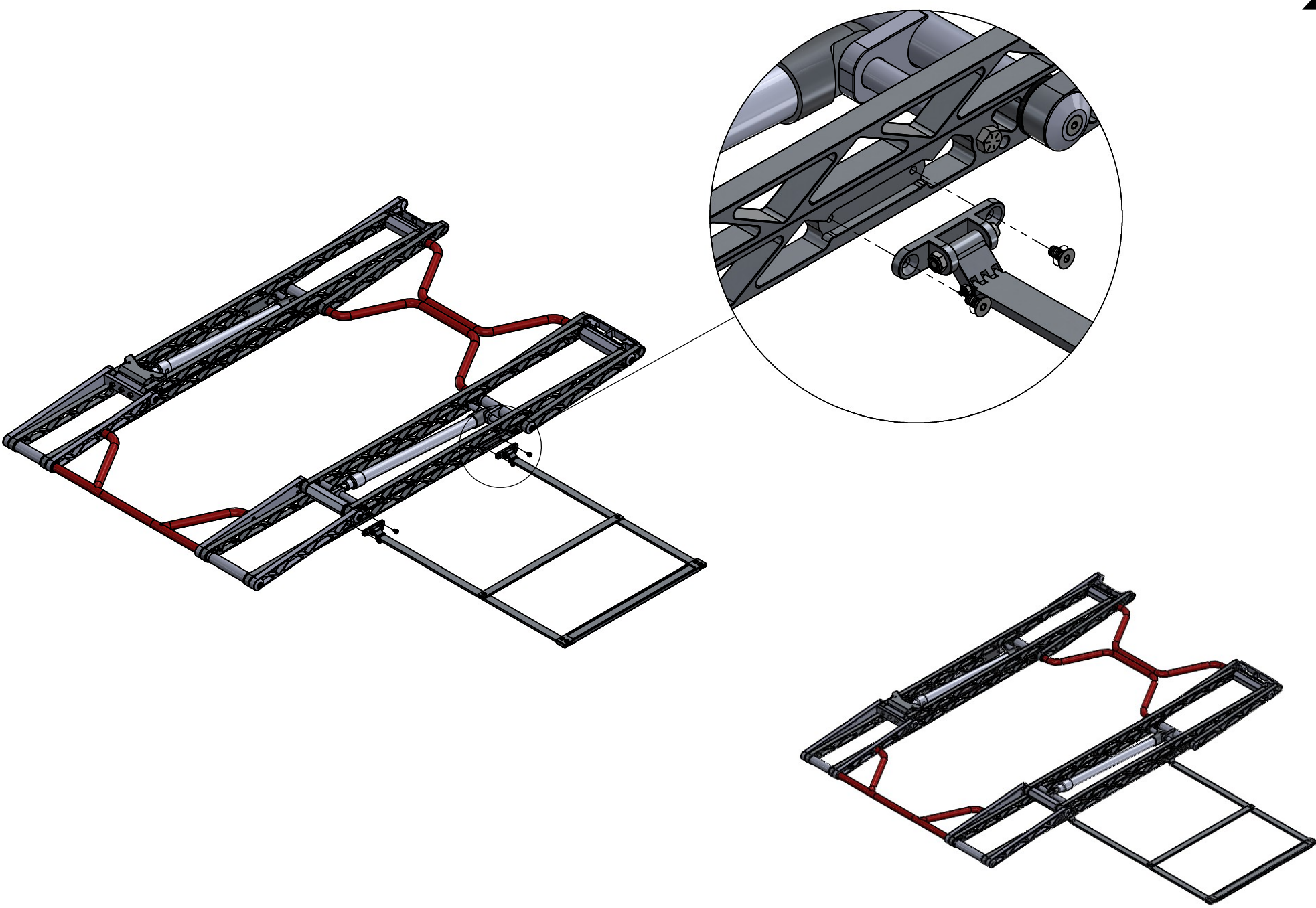
APPLY RED THREAD LOCK TO ENDCAP BOLTS AND TIGHTEN STEPS FIVE AND NINE

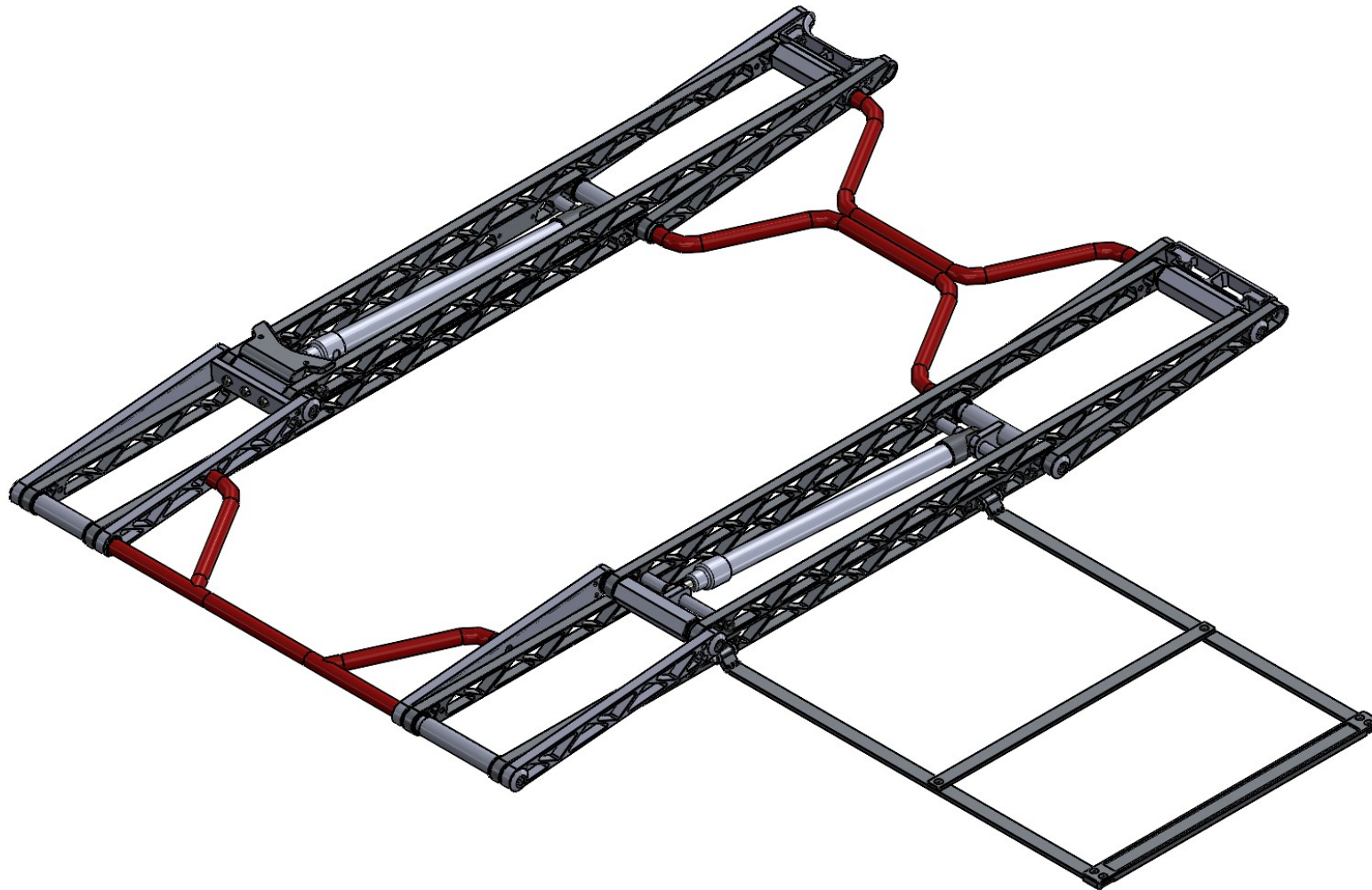
HANDLE ASSEMBLY

ITEM NO.	PART NUMBER	QTY.
1	1/4-20 LOCKNUT	2
2	1/4-20X.5" FLATHEAD SCREW	10
3	1/4-20X1.75 SOCKETHEAD CAP SCREW	2
4	5-40 LOCKNUT	2
5	5-40X1.25" BRASS ROUND HEAD SLOTTED SCREW	2
6	CROSSBAR	1
7	HANDLE BAR	1
8	HANDLE BASE	2
9	HANDLE HINGE	2
10	HANDSTRAP	2









****DO NOT USE BEFORE READING CAUTION PAGE****



BATTERY SPECIFICATIONS

LENGTH; 7.75" WIDTH 5.125" HEIGHT: 7.25"

CRANKING AMPS; 430

CCA; 340-350

BATTERIES PLUS PART # SLADC12-35J

NAPA PART # BAT 8227

ADVANCE AUTO PART U1-2

HYDRAULIC OIL 1-GALLON PREMIUM CLEAR

AW32 OR BETTER

DO NOT USE ATF (AUTOMATIC TRANSMISSION

FLUID) OR ANY RED FLUID OF ANY TYPE THIS WILL VOID THE WARRANTY ON THE CYLINDERS/ PUMP/ HOSES /ETC.

FAQ

WHAT ARE THE LIFTING CAPABILITIES? 4500LBS

WHAT HYDRAULIC SYSTEM DO YOU USE?

POWER UP/ POWER DOWN HYDRAULIC SYSTEM

CAN I WASH MY CAR ON THE LIFT?

YES, BUT DO NOT PUT DIRECT WATER PRESSURE ON THE CYLINDER SEALS

CAN I LEAVE MY CAR ON THE LIFT DURING THE WEEK?

YES. THERE IS NO LIMIT TO THE DURATION OF TIME THE CAR CAN STAY ON THE LIFT

HOW MUCH DOES THE LIFT WEIGH?

67LBS

HOW MUCH DOES THE PUMP BOX ASSEMBLY WEIGH?

65LBS, BUT IT IS ALL HOUSED IN A COMPACT ROLL AROUND TOOLBOX

WHAT ARE THE SAFETY FEATURES?

WITH OUR UNIT BEING POWER UP/ POWER DOWN WE ARE ABLE TO GO PAST 90

DEGREES. WHEN THE LIFT IS ALL THE WAY UP IT IS LOCKED. ALL LIFTS HAVE A BATTERY

DISCONNECT FEATURE AS WELL

WHAT ARE THE STANDARD DIMENSIONS?

- 41 INCHES OVERALL WIDTH

- 46.75 INCHES LONG

- 3 INCHES TALL WHEN COLLAPSED

- 32 INCHES CENTER TO CENTER

CONTACT
Info@tricontoolinc.com

CELL: 770-787-1002
OFFICE: 770-898-3907
171 Maranatha Road, McDonough, GA. 30252

WHO IS DIRTCARLIFT?

DirtCarLift.com was established in 2013. The company was built on a need for a better, faster, and safer way to service the racecar at the track or around the shop.

We now have thousands of clients spanning multiple divisions across the U.S, Australia, The Netherlands & Canada.

We pride ourselves in manufacturing a top of line all CNC machined, Power up/Power down, 4500lb lifting capacity hydraulic pit lift that is backed by phenomenal customer service.